

# Flow control valves GRLA-...-...-RR, CRGRLA-...-RR

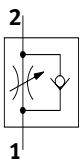
Flowrate: 0...820 l/min

Cleanroom class ISO 4 (FS209E class 10)

One-way flow control valves with exhaust-air flow control

Slotted head screw  
**GRLA-...-D-RR**

Knurled screw  
**GRLA-...-RS-D-RR**



are used to regulate exhaust air flow rates with double-acting cylinders. In the reverse direction, the air flows freely through the non-return valve with full cross-sectional flow.

- Precision adjustment for low speed
- Push-in connector
- Swivel joint rotatable 360° after installation
- Adjustment with slotted head or knurled screw
- Swivel joint, elbow outlet

**Technical data**

Operating pressure: 0.2...10 bar  
Temperature range: -10...+60 °C

**Material:**

GRLA... : Die-cast zinc  
CRGRLA-...: X5 CrNiMoNb 18 10

Remark: Standard nominal flowrate [l/min] refer to the flow controlled direction from 6 to 5 bar.

CRGRLA-...-RR



GRLA-...-D-RR



GRLA-...-RS-D-RR



Connection	Tightening torque [Nm]
M5	1.5
G1/8	5.5
G1/4	11
3/8	20

Type	Part No.	Connection	Std nominal flowrate [l/min]
CRGRLA-M5-B-RR	15024852	M5	0...95
CRGRLA-1/8-B-RR	15024853	G1/8	0...340
CRGRLA-1/4-B-RR	15024854	G1/4	0...610

Type	Part No.	Connection	Std nominal flowrate [l/min]
GRLA-M5-QS-3-D-RR	15085347	M5	0...100
GRLA-M5-QS-4-D-RR	15085348	M5	0...100
GRLA-M5-QS-6-D-RR	15085349	M5	0...115
GRLA-1/8-QS-3-D-RR	15085350	G1/8	0...130
GRLA-1/8-QS-4-D-RR	15085351	G1/8	0...160
GRLA-1/8-QS-6-D-RR	15085352	G1/8	0...185
GRLA-1/8-QS-8-D-RR	15085353	G1/8	0...215
GRLA-1/4-QS-6-D-RR	15085384	G1/4	0...400
GRLA-1/4-QS-8-D-RR	15085385	G1/4	0...475
GRLA-1/4-QS-10-D-RR	15085386	G1/4	0...480
GRLA-3/8-QS-6-D-RR	15085387	G3/8	0...495
GRLA-3/8-QS-8-D-RR	15085388	G3/8	0...820

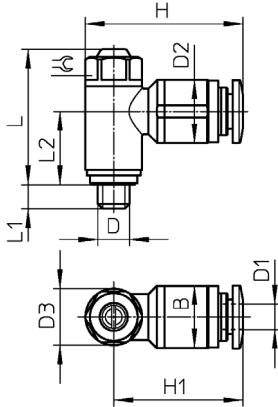
Type	Part No.	Connection	Std nominal flowrate [l/min]
GRLA-M5-QS-3-RS-D-RR	15085389	M5	0...100
GRLA-M5-QS-4-RS-D-RR	15085390	M5	0...100
GRLA-M5-QS-6-RS-D-RR	15085391	M5	0...115
GRLA-1/8-QS-3-RS-D-RR	15085392	G1/8	0...130
GRLA-1/8-QS-4-RS-D-RR	15085393	G1/8	0...160
GRLA-1/8-QS-6-RS-D-RR	15085394	G1/8	0...185
GRLA-1/8-QS-8-RS-D-RR	15085395	G1/8	0...215
GRLA-1/4-QS-6-RS-D-RR	15085396	G1/4	0...400
GRLA-1/4-QS-8-RS-D-RR	15085397	G1/4	0...475
GRLA-1/4-QS-10-RS-D-RR	15085398	G1/4	0...480
GRLA-3/8-QS-6-RS-D-RR	15085399	G3/8	0...495
GRLA-3/8-QS-8-RS-D-RR	15085400	G3/8	0...820

# Flow control valves GRLA-...-...-RR, CRGRLA-...-RR

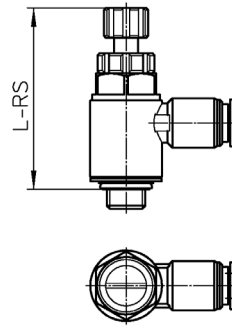
Flowrate: 0...820 l/min

Cleanroom class ISO 4 (FS209E class 10)

Slotted head screw  
GRLA-...-D-RR

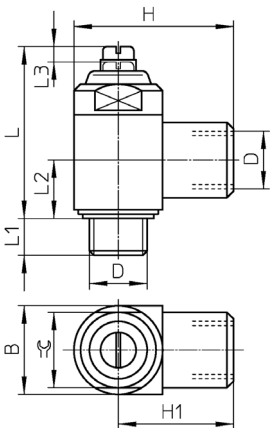


Knurled screw  
GRLA-...-RS-D-RR



Connection	Tubing O.D.	B	D2 ∅	D3 ∅	H	H1	L max.	L-RS max.	L1	L2	⌀
M5	3	8.9	8.2 + 0.15	8.9 ± 0.07	22.4	18	21.4	31.3	3.7 + 0.17/- 0.25	11.65	8
	4	9.9	10.0 ± 0.2		24.7	20.3				11.65	
	6	12	12.0 ± 0.2		26.5	22				10.65	
G1/8	3	13.8	10.2 ± 0.2	13.8 ± 0.07	31.9	25	26.9	40.4	5.1 + 0.17/- 0.25	14.4	12
	4		10.2 ± 0.2		29.4	22.5				14.4	
	6		12.5 ± 0.2		32.6	25.7				13.7	
	8		14.5 ± 0.2		35.6	28.7				13.7	
G1/4	6	17.8	12.5 ± 0.2	17.8 ± 0.15	36.6	27.7	31.5	48.3	5.9 + 0.17/- 0.25	17.2	15
	8		14.5 ± 0.2		36.6	30.7				17.2	
	10		17.5 ± 0.2		42	33.1				16.1	
G3/8	6	22.4	12.5 ± 0.2	22.4 ± 0.15	39.8	28.6	36	55.3	6.95 + 0.15/- 0.3	20.3	19
	8		14.5 ± 0.2		44.1	32.9				19.3	
	10		17.5 ± 0.2		46.7	35.5				19.3	

Slotted head screw  
CRGRLA-...-RR



Type	B	D	H	H1	L	L1	L2	L3	⌀
CRGRLA-M5-B-RR	10	M5	17.5	12.5	23.2	4	7.1	2.5	9
CRGRLA-1/8-B-RR	16	G1/8	28	20	33.7	5.3	10.3	3.5	14
CRGRLA-1/4-B-RR	20	G1/4	36	26	38.8	8.3	13.2	3.5	17