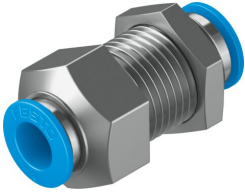


Push-in bulkhead connector QSS-8-F

Part number: 130642

FESTO



 General operating condition

Data sheet

Feature	Value
Size	Standard
Nominal size	5.5 mm
Tubing insertion depth	18.2 mm
Mounting position	Any
Design	Bulkhead
Size of pack	10
Design	Push-pull principle
Operating pressure complete temperature range	-0.095 MPa ... 0.6 MPa
Operating pressure complete temperature range	-0.95 bar ... 6 bar
Operating pressure complete temperature range	-13.775 psi ... 87 psi
Temperature-dependent operating pressure	-0.095 MPa ... 1.4 MPa
Temperature-dependent operating pressure	-0.95 bar ... 14 bar
Temperature-dependent operating pressure	-13.775 psi ... 203 psi
Note on operating pressure	Water: max. 0.6 MPa at max. 50°C
Operating medium	Compressed air to ISO 8573-1:2010 [7:-:-] Water (liquid, ice-free)
Note on operating and pilot medium	Lubricated operation possible
Corrosion resistance class CRC	1 - Low corrosion stress
LABS (PWIS) conformity	VDMA24364-B1/B2-L
Cleanroom suitability, measured according to ISO 14644-14	Class 4 according to ISO 14644-1
Ambient temperature	-10 °C ... 80 °C
Product weight	40 g
Pneumatic connection, port 1	For tubing outer diameter of 8 mm
Pneumatic connection, port 2	For tubing outside diameter of 8 mm
Colour of release ring	Blue
Note on materials	RoHS compliant
Material housing	Brass, nickel-plated
Material release ring	POM
Material nut	Nickel-plated brass
Material tubing seal	NBR
Material tubing clamp component	High-alloy stainless steel