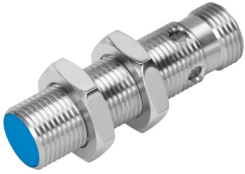


# Proximity sensor SIEN-M12B-NO-S-L

Part number: 150405

FESTO



[General operating condition](#)

## Data sheet

Feature	Value
Conforms to standard	EN 60947-5-2
Symbol	00992831
Approval	RCM c UL us - Listed (Oil)
CE mark (see declaration of conformity)	To EU EMC Directive In accordance with EU RoHS Directive
UKCA marking (see declaration of conformity)	according to UK RoHS instructions (UK-R)
Rated operating distance	2 mm
Assured operating distance	1.62 mm
Reduction factors	Aluminium = 0.4 Stainless steel St 18/8 = 0.6 Copper = 0.3 Brass = 0.5 Steel St 37 = 1.0
Ambient temperature	-25 °C ... 70 °C
Repetition accuracy with constant conditions	0.1 mm
Switching output	NPN
Switching element function	N/C contact
Hysteresis	≤0.18 mm
Max. switching frequency	3000 Hz
Max. output current	200 mA
Voltage drop	≤2 V
Inductive protective circuit	Integrated
Short circuit current rating	Pulsed
Operational voltage range DC	10 V ... 30 V
Residual ripple	± 10%
No-load supply current	≤10 mA
Reverse polarity protection	For all electrical connections
Electrical connection 1, connection type	Plug
Electrical connection 1, connector system	M12x1, A-coded to EN 61076-2-101
Electrical connection 1, number of connections/cores	4
Electrical connection 1, type of mounting	Not rotatable
Electrical connection 1, compatible type of mounting	Compatible with rotatable screw-type lock
Size	M12x1
Type of mounting	Via lock nut
Mounting type	Flush
Product weight	30 g

<b>Feature</b>	<b>Value</b>
Material housing	PBTP nickel-plated
Switching status indication	Yellow LED
Ambient temperature with moving cable	-5 °C ... 70 °C
Degree of protection	IP65 IP67
Corrosion resistance class CRC	2 - Moderate corrosion stress
LABS (PWIS) conformity	VDMA24364-B2-L
Additional information for sensor selection	With standards-based switching distance
Electrical output	NPN
Selection of sensor design	Standard