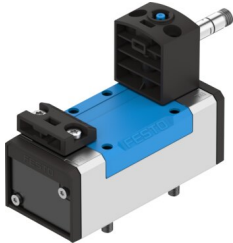


# Solenoid valve MFH-5/2-D-1-S-C

Part number: 152562

FESTO



[PDF General operating condition](#)

## Data sheet

Feature	Value
Valve function	5/2-way, single solenoid
Type of actuation	Electrical
Construction width	42 mm
Standard nominal flow rate (standardised to DIN 1343)	1200 l/min
pneumatic working port	Sub-base size 1 to ISO 5599-1 G1/4
Operating voltage	Via solenoid coil, must be ordered separately
Operating pressure	-0.09 MPa ... 1.6 MPa
Operating pressure	-0.9 bar ... 16 bar
Design	Piston gate valve
Type of reset	Pneumatic spring
Approval	c UL us - Recognised (Oil)
Maritime classification	See certificate
Certificate issuing authority	DNV-TAA000032X UL MH19482
Degree of protection	IP65
Nominal size	8 mm
Grid dimension	43 mm
Exhaust-air function	Can be throttled
Sealing principle	Soft
Mounting position	Any
Conforms to standard	ISO 5599-1
Manual override	Detenting via accessory Non-detenting
ISO code	164
Type of piloting	Piloted
Pilot air supply	External
Flow direction	Reversible
Symbol	00991301
lap	Overlap
Pilot pressure	0.2 MPa ... 1 MPa
Pilot pressure	2 bar ... 10 bar
Suitability for vacuum	Yes
Switching time off	35 ms
Switching time on	23 ms
Max. positive test pulse with 0 signal	2200 µs

Feature	Value
Max. negative test pulse with 1 signal	3700 µs
Operating medium	Compressed air to ISO 8573-1:2010 [7:4:4]
Note on operating and pilot medium	Lubricated operation possible (in which case lubricated operation will always be required)
Vibration resistance	Transport application test with severity level 1 to FN 942017-4 and EN 60068-2-6
Shock resistance	Shock test with severity level 2 to FN 942017-5 and EN 60068-2-27
LABS (PWIS) conformity	VDMA24364-B1/B2-L
Media temperature	-10 °C ... 60 °C
Sound pressure level	85 dB(A)
Pilot medium	Compressed air to ISO 8573-1:2010 [7:4:4]
Ambient temperature	-5 °C ... 40 °C
Product weight	390 g
Electrical connection	3-pin Type A, with VACF-A coil Type B industry (11 mm), with MSF coil Via solenoid coil, to be ordered separately
Type of mounting	On sub-base With through-hole
Pilot exhaust port 84	M5
Pilot air port 12	Sub-base size 1 to ISO 5599-1
Pilot air port 14	Sub-base size 1 to ISO 5599-1
Pneumatic connection, port 1	Sub-base size 1 to ISO 5599-1
Pneumatic connection, port 2	Sub-base size 1 to ISO 5599-1
Pneumatic connection, port 3	Sub-base size 1 to ISO 5599-1
Pneumatic connection, port 4	Sub-base size 1 to ISO 5599-1
Pneumatic connection, port 5	Sub-base size 1 to ISO 5599-1
Note on materials	RoHS compliant
Material seals	HNBR NBR
Material housing	Die-cast aluminium