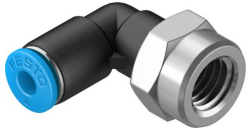


Push-in L-fitting QSLF-1/8-4-B

Part number: 153273

FESTO



 General operating condition

Data sheet

| Feature | Value |
|---|---|
| Size | Standard |
| Nominal size | 2.8 mm |
| Tubing insertion depth | 14.9 mm |
| Mounting position | Any |
| Design | L-shape |
| Size of pack | 10 |
| Design | Push-pull principle |
| Operating pressure complete temperature range | -0.095 MPa ... 0.6 MPa |
| Operating pressure complete temperature range | -0.95 bar ... 6 bar |
| Operating pressure complete temperature range | -13.775 psi ... 87 psi |
| Temperature-dependent operating pressure | -0.095 MPa ... 1.4 MPa |
| Temperature-dependent operating pressure | -0.95 bar ... 14 bar |
| Temperature-dependent operating pressure | -13.775 psi ... 203 psi |
| Note on operating pressure | Water: max. 0.6 MPa at max. 50°C |
| Operating medium | Compressed air to ISO 8573-1:2010 [7:-:-] Water (liquid, ice-free) |
| Note on operating and pilot medium | Lubricated operation possible |
| Corrosion resistance class CRC | 1 - Low corrosion stress |
| LABS (PWIS) conformity | VDMA24364-B1/B2-L |
| Cleanroom suitability, measured according to ISO 14644-14 | Class 4 according to ISO 14644-1 |
| Ambient temperature | -10 °C ... 80 °C |
| Nominal torque | 7 Nm |
| Tolerance for nominal tightening torque | ±20% |
| Product weight | 14 g |
| Type of mounting | External hex SW14 |
| Pneumatic connection, port 1 | Female thread G1/8 |
| Pneumatic connection, port 2 | For tubing outside diameter of 4 mm |
| Colour of release ring | Blue |
| Material screwed plug | Nickel-plated brass |
| Note on materials | RoHS compliant |
| Material housing | PBT |
| Material release ring | POM |
| Material tubing seal | NBR |
| Material tubing clamp component | High-alloy stainless steel |