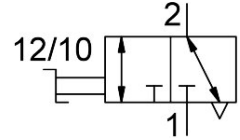


Shut-off valve HE-3-1/2-QS-12

Part number: 153482

FESTO



[PDF General operating condition](#)

Data sheet

Feature	Value
Valve function	3/2-way, double solenoid
Selection of additional functions	With exhaust function
Pneumatic connection, port 1	R1/2
Pneumatic connection, port 2	QS-12
Type of actuation	Manual
Type of mounting	Direct mounting via through-hole Direct mounting via thread
Standard nominal flow rate (standardised to DIN 1343)	834.3 l/min
Nominal size	4.7 mm
Operating pressure	-0.095 MPa ... 1 MPa
Operating pressure	-0.95 bar ... 10 bar
Ambient temperature	0 °C ... 60 °C
Material housing	Reinforced PBT
Operating medium	Compressed air to ISO 8573-1:2010 [7:-:-]
Exhaust-air function	Cannot be throttled
Sealing principle	Soft
Mounting position	Any
Design	Piston gate valve
Type of piloting	Direct
Flow direction	Non-reversible
Symbol	00997329
Note on operating and pilot medium	Lubricated operation possible (in which case lubricated operation will always be required)
Corrosion resistance class CRC	2 - Moderate corrosion stress
LABS (PWIS) conformity	VDMA24364-B1/B2-L
Cleanroom suitability, measured according to ISO 14644-14	Class 4 according to ISO 14644-1
Media temperature	0 °C ... 60 °C
Product weight	86 g
Pneumatic connection, port 3	Not ducted
Material screwed plug	Nickel-plated brass
Note on materials	RoHS compliant
Material seals	NBR