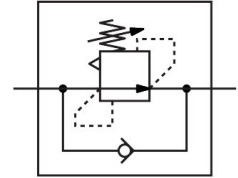


# Differential pressure regulator LRL1-1/4-QS-10

Part number: 153506

FESTO



 General operating condition

## Data sheet

Feature	Value
Controller function	Differential pressure constant With return flow function
Pneumatic connection, port 1	R1/4
Pneumatic connection, port 2	QS-10
Type of mounting	Screw-in
Nominal flow rate open	269 l/min
Pressure regulation range	2 bar ... 6 bar
Inlet pressure 1	0 MPa ... 0.9 MPa
Inlet pressure 1	0 bar ... 9 bar
Inlet pressure 1	0 psi ... 130.5 psi
Ambient temperature	0 °C ... 60 °C
Material housing	Reinforced PBT
Operating medium	Compressed air to ISO 8573-1:2010 [7:-:-]
Actuator lock	Counter-locking
Mounting position	Any
Design	Directly actuated piston regulator With through compressed air supply
Symbol	00991535
Nominal flow rate closed	262 l/min
Note on operating and pilot medium	Lubricated operation possible (in which case lubricated operation will always be required)
LABS (PWIS) conformity	VDMA24364-B1/B2-L
Product weight	42 g
Material screwed plug	Nickel-plated brass
Note on materials	RoHS compliant
Material thread seal	PTFE