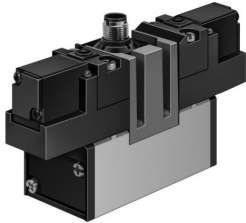


# Solenoid valve

## JMEBH-5/2-D-3-ZSR-C

Part number: 184509

FESTO



[PDF](#) General operating condition

## Data sheet

| Feature   | Value  |
|---|--|
| Valve function  | 5/2-way, double solenoid   |
| Type of actuation                                     | Electrical   |
| Construction width                                    | 65 mm  |
| Standard nominal flow rate (standardised to DIN 1343) | 4500 l/min   |
| pneumatic working port                                | Sub-base size 3 to ISO 5599-1<br>G1/2  |
| Operating voltage                                     | 24 V DC  |
| Operating pressure                                    | 0.2 MPa ... 1 MPa  |
| Operating pressure                                    | 2 bar ... 10 bar   |
| Design  | Piston gate valve  |
| Degree of protection                                  | IP65   |
| Nominal size  | 14.5 mm  |
| Grid dimension  | 71 mm  |
| Exhaust-air function                                  | Can be throttled   |
| Sealing principle                                     | Soft   |
| Mounting position                                     | Any  |
| Conforms to standard                                  | ISO 5599-1   |
| Manual override                                       | Non-detenting  |
| ISO code  | 355  |
| Type of piloting                                      | Piloted  |
| Pilot air supply                                      | Internal   |
| Flow direction  | Non-reversible   |
| Symbol  | 00991005   |
| Switching time reversal                               | 16 ms  |
| Characteristic coil data                              | 24 V DC: 2.5 W   |
| Operating medium                                      | Compressed air to ISO 8573-1:2010 [7:4:4]  |
| Note on operating and pilot medium                    | Lubricated operation possible (in which case lubricated operation will always be required) |
| Corrosion resistance class CRC                        | 2 - Moderate corrosion stress  |
| LABS (PWIS) conformity                                | VDMA24364-B1/B2-L  |
| Media temperature                                     | -10 °C ... 50 °C   |
| Ambient temperature                                   | -10 °C ... 50 °C   |
| Product weight  | 1080 g   |
| Electrical connection                                 | M12x1<br>Central plug<br>Round design  |
| Type of mounting                                      | With through-hole  |

| <b>Feature</b>               | <b>Value</b>                  |
|------------------------------|-------------------------------|
| Pilot exhaust port 82        | Not ducted                    |
| Pilot exhaust port 84        | Not ducted                    |
| Pneumatic connection, port 1 | Sub-base size 3 to ISO 5599-1 |
| Pneumatic connection, port 2 | Sub-base size 3 to ISO 5599-1 |
| Pneumatic connection, port 3 | Sub-base size 3 to ISO 5599-1 |
| Pneumatic connection, port 4 | Sub-base size 3 to ISO 5599-1 |
| Pneumatic connection, port 5 | Sub-base size 3 to ISO 5599-1 |
| Material seals               | NBR                           |
| Material housing             | Die-cast aluminium            |