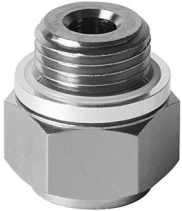


Holder for suction cup with connection ESH-HE-4-G1/8

Part number: 189256

FESTO



 [General operating condition](#)

Data sheet

Feature	Value
Nominal size	4 mm
Volume	0.289 cm ³
Mounting position	Any
Design	Vacuum port on top
Correlation to suction-cup holder	Size 4
Operating medium	Atmospheric air based on ISO 8573-1:2010 [7::-]
Corrosion resistance class CRC	1 - Low corrosion stress
LABS (PWIS) conformity	VDMA24364-A1-L
Ambient temperature	-10 °C ... 60 °C
Product weight	11 g
Type of mounting	With male thread Via vacuum port
Suction cup mounting	M6
Vacuum connection	G1/8
Note on materials	RoHS compliant
Material seals	Wrought aluminium alloy NBR POM Steel
Material retaining bracket	Tempered steel