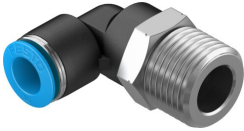


Push-in L-fitting QSL-1/2-10

Part number: 190661

FESTO



 General operating condition

Data sheet

Feature	Value
Size	Standard
Nominal size	8.3 mm
Tubing insertion depth	20.2 mm
Type of seal on screwed plug	Coating
Mounting position	Any
Design	L-shape
Size of pack	1
Design	Push-pull principle
Operating pressure complete temperature range	-0.095 MPa ... 0.6 MPa
Operating pressure complete temperature range	-0.95 bar ... 6 bar
Operating pressure complete temperature range	-13.775 psi ... 87 psi
Temperature-dependent operating pressure	-0.095 MPa ... 1.4 MPa
Temperature-dependent operating pressure	-0.95 bar ... 14 bar
Temperature-dependent operating pressure	-13.775 psi ... 203 psi
Note on operating pressure	Water: max. 0.6 MPa at max. 50°C
Operating medium	Compressed air to ISO 8573-1:2010 [7:-:-] Water (liquid, ice-free)
Note on operating and pilot medium	Lubricated operation possible
Corrosion resistance class CRC	1 - Low corrosion stress
LABS (PWIS) conformity	VDMA24364-B1/B2-L
Cleanroom suitability, measured according to ISO 14644-14	Class 4 according to ISO 14644-1
Ambient temperature	-10 °C ... 80 °C
Product weight	57 g
Type of mounting	External hex SW21
Pneumatic connection, port 1	Male thread R1/2
Pneumatic connection, port 2	For tubing outside diameter of 10 mm
Colour of release ring	Blue
Material screwed plug	Nickel-plated brass
Note on materials	RoHS compliant
Material housing	PBT
Material release ring	POM
Material tubing seal	NBR
Material tubing clamp component	High-alloy stainless steel