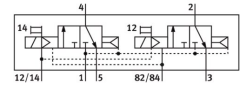


# Solenoid valve CDVI5.0-MT2H-2X3GLS

Part number: 196661

FESTO



General operating condition

## Data sheet

Feature	Value
Valve function	2x3/2-way, monostable, closed
Type of actuation	Electric
Standard nominal flow rate (standardised to DIN 1343)	300 l/min
pneumatic working port	Sub-base
Operating voltage	24V DC
Operating pressure	3 bar ... 10 bar
Design	Piston gate valve
Type of reset	Pneumatic spring
Nominal size	5 mm
Sealing principle	Soft
Manual override	Non-detenting
Type of piloting	Pilot actuated
Pilot air supply	External
Flow direction	Non-reversible
Symbol	00991809
Note on forced dynamization	Switching frequency min. 1/month
Pilot pressure	3 bar ... 8 bar
b value	0.14
C value	1.4 l/sbar
Switching time off	22 ms
Switching time on	10 ms
Operating medium	Compressed air to ISO 8573-1:2010 [7:4:4]
Note on operating and pilot medium	Lubricated operation possible (in which case lubricated operation will always be required)
Corrosion resistance class CRC	3 - high corrosion stress
LABS (PWIS) conformity	VDMA24364-B2-L
Media temperature	-5 °C ... 50 °C
Ambient temperature	-5 °C ... 50 °C
Product weight	210 g
Type of mounting	Screw-in
Pilot exhaust port 82/84	Sub-base
Pneumatic connection, port 1	Sub-base
Pneumatic connection, port 2	Sub-base
Pneumatic connection, port 3	Sub-base
Pneumatic connection, port 4	Sub-base
Pneumatic connection, port 5	Sub-base

<b>Feature</b>	<b>Value</b>
Note on materials	RoHS-compliant
Material seals	NBR TPE-O
Material housing	Die-cast aluminium