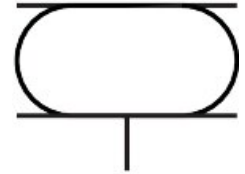


Bellows cylinder EB-80-20

Part number: 2748903

FESTO



 General operating condition

Data sheet

Feature	Value
Size	80
Required installation diameter	95 mm
Stroke	20 mm
Max. extended height	70 mm
Max. angle of inclination	10 deg
Max. offset	5 mm
Min. installation height	50 mm
Mounting position	Any
Mode of operation	Single-acting
Symbol	00991205
Operating pressure	0 MPa ... 0.8 MPa
Operating pressure	0 bar ... 8 bar
Operating pressure	0 psi ... 116 psi
Operating medium	Compressed air to ISO 8573-1:2010 [-:::4]
Note on operating and pilot medium	Lubricated operation not possible
Corrosion resistance class CRC	0 - No corrosion stress
LABS (PWIS) conformity	VDMA24364-B1/B2-L
Ambient temperature	-40 °C ... 70 °C
Reset force	400 N
Product weight	500 g
Type of mounting	With female thread
Pneumatic connection	G1/4
Note on materials	RoHS compliant
Material bellows	CR
Material housing	Die-cast aluminium