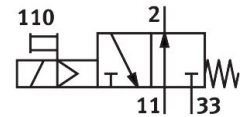
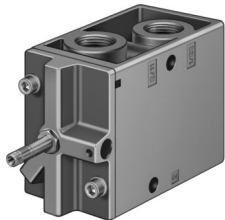


Solenoid valve MOFH-3-3/4-EX

Part number: 536192

FESTO



[PDF](#) General operating condition

Data sheet

Feature	Value
Valve function	3/2-way, single solenoid, open
Type of actuation	Electrical
Construction width	68 mm
Standard nominal flow rate (standardised to DIN 1343)	7500 l/min
pneumatic working port	G3/4
Operating voltage	Via solenoid coil, must be ordered separately
Operating pressure	0.2 MPa ... 0.8 MPa
Operating pressure	2 bar ... 8 bar
Design	Poppet seat
Type of reset	Mechanical spring
CE mark (see declaration of conformity)	To EU Explosion Protection Directive (ATEX)
Explosion protection certification outside the EU	EPL Db (GB) EPL Gb (GB)
UKCA marking (see declaration of conformity)	To UK EX instructions
ATEX category gas	II 2G
ATEX category dust	II 2D
Explosion ignition protection type for gas	Ex h IIC T4 Gb
Explosion ignition protection type for dust	Ex h IIIC T130°C Db
Explosion ambient temperature	-5°C ≤ Ta ≤ +40°C
Degree of protection	IP65
Nominal size	19 mm
Exhaust-air function	Can be throttled
Sealing principle	Soft
Mounting position	Any
Manual override	Detenting
Type of piloting	Piloted
Pilot air supply	Internal
Flow direction	Non-reversible
Symbol	00991017
lap	Underlap
Switching time off	29 ms
Switching time on	40 ms
Max. positive test pulse with 0 signal	2200 μs
Characteristic coil data	See solenoid coil, to be ordered separately

Feature	Value
Explosion protection	Zone 1 (ATEX) Zone 1 (UKEX) Zone 2 (ATEX) Zone 21 (ATEX) Zone 21 (UKEX) Zone 22 (ATEX)
Operating medium	Compressed air to ISO 8573-1:2010 [7:4:4]
Note on operating and pilot medium	Lubricated operation possible (in which case lubricated operation will always be required)
Corrosion resistance class CRC	1 - Low corrosion stress
LABS (PWIS) conformity	VDMA24364-B1/B2-L
Storage temperature	-20 °C ... 60 °C
Media temperature	-5 °C ... 40 °C
Ambient temperature	-5 °C ... 40 °C
Product weight	1260 g
Electrical connection	Via F coil, to be ordered separately
Type of mounting	With through-hole
Breather connection	M3
Pilot exhaust port 82	M5
Pneumatic connection, port 1	G3/4
Pneumatic connection, port 11	G3/4
Pneumatic connection, port 2	G3/4
Pneumatic connection, port 3	G3/4
Pneumatic port 33	G3/4
Note on materials	RoHS compliant
Material seals	NBR
Material housing	Die-cast aluminium