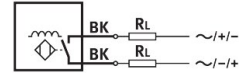
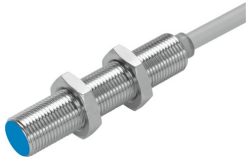



# Proximity sensor SIED-M12B-ZS-K-L

Part number: 538272

FESTO



 [General operating condition](#)

## Data sheet

| Feature                                      | Value  |
|--|--|
| Design                                       | Round  |
| Conforms to standard                         | EN 60947-5-2   |
| Symbol                                       | 00991712   |
| Approval                                     | RCM<br>c UL us - Listed (Oil)  |
| CE mark (see declaration of conformity)      | To EU EMC Directive<br>To EU Low Voltage Directive   |
| UKCA marking (see declaration of conformity) | To UK regulations for electrical equipment   |
| Measuring principle                          | Inductive  |
| Rated operating distance                     | 2 mm   |
| Assured operating distance                   | 1.62 mm  |
| Reduction factors                            | Aluminium = 0.5<br>Stainless steel St 18/8 = 0.9<br>Copper = 0.4<br>Brass = 0.6<br>Steel St 37 = 1.0 |
| Ambient temperature                          | -25 °C ... 85 °C   |
| Repetition accuracy                          | 0.1 mm   |
| Switching output                             | Contactless, 2-wire  |
| Switching element function                   | N/O contact  |
| Hysteresis                                   | 0.02 mm ... 0.44 mm  |
| Max. switching frequency DC                  | 1200 Hz  |
| Max. switching frequency AC                  | 25 Hz  |
| Max. output current                          | 200 mA   |
| Voltage drop                                 | ≤8 V   |
| Min. load current                            | 5 mA   |
| Short circuit current rating                 | No   |
| Operational voltage range AC                 | 20 V ... 265 V   |
| Operational voltage range DC                 | 20 V ... 320 V   |
| Mains frequency                              | 50 Hz  |
| No-load supply current                       | ≤1.5 mA  |
| Reverse polarity protection                  | For all electrical connections   |
| Electrical connection                        | Cable  |
| Cable length                                 | 2.5 m  |
| Material cable sheath                        | TPE-U(PUR)   |
| Material insulating sheath                   | PVC  |
| Size   | M12  |

| <b>Feature</b>                              | <b>Value</b>             |
|---|--------------------------|
| Type of mounting                            | Via lock nut             |
| Tightening torque                           | 10 Nm                    |
| Mounting type                               | Flush                    |
| Product weight                              | 90 g                     |
| Material housing                            | nickel-plated            |
| Switching status indication                 | Yellow LED               |
| Ambient temperature with moving cable       | -5 °C ... 50 °C          |
| Degree of protection                        | IP67                     |
| Corrosion resistance class CRC              | 1 - Low corrosion stress |
| LABS (PWIS) conformity                      | VDMA24364-B2-L           |
| Additional information for sensor selection | For DC and AC voltage    |
| Electrical output                           | Contactless, 2-wire      |
| Selection of sensor design                  | Standard                 |