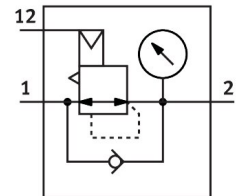


# Pressure regulator MS12-LR-G-PO

Part number: 541680

FESTO



[PDF General operating condition](#)

## Data sheet

Feature	Value
Size	12
Series	MS
Mounting position	Any
Design	Diaphragm regulator
Controller function	Output pressure constant With primary pressure compensation With secondary exhausting With return flow function
Symbol	00991900
Pressure gauge (ANALOG) or Pressure display (DIGITAL)	With pressure gauge
Operating pressure	0.08 MPa ... 2.1 MPa
Operating pressure	0.8 bar ... 21 bar
Pressure regulation range	0.5 bar ... 16 bar
Max. pressure hysteresis	0.04 MPa
Max. pressure hysteresis	0.4 bar
Max. pressure hysteresis	5.8 psi
Flow rate of secondary exhaust	≤600 l/min
Standard nominal flow rate (standardised to DIN 1343)	13000 l/min ... 22000 l/min
Operating medium	Compressed air to ISO 8573-1:2010 [7:4:4] Inert gas
Corrosion resistance class CRC	2 - Moderate corrosion stress
LABS (PWIS) conformity	VDMA24364-B1/B2-L
Storage temperature	-10 °C ... 60 °C
Media temperature	-10 °C ... 60 °C
Ambient temperature	-10 °C ... 60 °C
Product weight	4000 g
Type of mounting	With mounting bracket
Pilot air port 12	G1/4
Pneumatic connection, port 1	Sub-base
Pneumatic connection, port 2	Sub-base
Material covering	Process automation
Note on materials	RoHS compliant
Material underneath cover	Wrought aluminium alloy
Material seals	NBR
Material spring	Spring steel

<b>Feature</b>	<b>Value</b>
Material housing	Die-cast aluminium
Material membrane	NBR
Material valve stem	Wrought aluminium alloy NBR High-alloy stainless steel