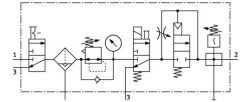


# Service unit combination MSB6-1/2:C3J4D1A1F3-WP

Part number: 542287

FESTO



 [General operating condition](#)

## Data sheet

Feature	Value
Size	6
Series	MS
Actuator lock	Rotary knob with detent can be closed with accessories
Mounting position	Vertical +/-5°
Grade of filtration	5 µm
Condensate drain	Fully automatic
Design	Branching module Soft-start valve Pressure switch On/off valve Filter regulator with pressure gauge
Controller function	Output pressure constant With primary pressure compensation With secondary exhausting With return flow function
Bowl guard	Plastic bowl guard
Symbol	00991760
Pressure gauge (ANALOG) or Pressure display (DIGITAL)	With pressure gauge
Operating pressure	4,5 bar ... 12 bar
Pressure regulation range	4 bar ... 12 bar
Standard nominal flow rate (standardised to DIN 1343)	3000 l/min
Characteristic coil data	24 V DC: 1.5 W
Operating medium	Compressed air to ISO 8573-1:2010 [7:4:4] Inert gas
Note on operating and pilot medium	Lubricated operation possible (in which case lubricated operation will always be required)
Corrosion resistance class CRC	2 - Moderate corrosion stress
LABS (PWIS) conformity	VDMA24364-B1/B2-L
Storage temperature	-10 °C ... 60 °C
Suitable for use with food	See supplementary material information
Air purity class at output	Compressed air to ISO 8573-1:2010 [6:4:4]
Media temperature	5 °C ... 60 °C
Ambient temperature	5 °C ... 60 °C
Product weight	3500 g
Type of mounting	With accessories
Pneumatic connection, port 1	G1/2
Pneumatic connection, port 2	G1/2

<b>Feature</b>	<b>Value</b>
Pneumatic connection, port 3	G1/2
Note on materials	RoHS compliant
Material housing	Die-cast aluminium
Material bowl	Makrolon®