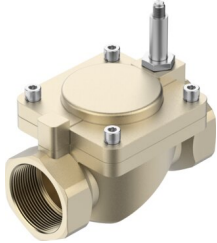


Solenoid valve VZWM-L-M22C-G2-F5

Part number: 546153

FESTO



 General operating condition

Data sheet

Feature	Value
Design	Diaphragm valve servo-controlled
Type of actuation	Electric
Sealing principle	Soft
Mounting position	Preferably vertical
Type of mounting	In-line installation
Connection Process valve	G2
Electrical connection	Solenoid coil type MH-... , coil can be ordered as an accessory
Nominal size	50 mm
Valve function	2/2-way, closed, monostable
Flow direction	Non-reversible
Medium	Compressed air to ISO 8573-1:2010 [7:4:4] Inert gases Water Neutral fluids
Medium pressure, valve for liquid media	0.07 MPa ... 0.6 MPa
Medium pressure, valve for liquid media	0.7 bar ... 6 bar
Medium pressure, valve for liquid media	10.15 psi ... 87 psi
Medium pressure, valve for gaseous media	0.07 MPa ... 1 MPa
Medium pressure, valve for gaseous media	0.7 bar ... 10 bar
Medium pressure, valve for gaseous media	10.15 psi ... 145 psi
Burst pressure	4 MPa
Burst pressure	40 bar
Burst pressure	580 psi
Overload pressure	2.5 MPa
Overload pressure	25 bar
Overload pressure	362.5 psi
Pressure difference	0.07 MPa
Pressure difference	0.7 bar
Pressure difference	10.15 psi

Feature	Value
Type of piloting	Pilot actuated
Symbol	00995681
Max. viscosity	22 mm ² /s
Media temperature	-10 °C ... 60 °C
Media temperature for fluids	5 °C ... 50 °C
Ambient temperature	-10 °C ... 60 °C
Flow rate Kv	39 m ³ /h
Standard nominal flow rate (standardised to DIN 1343)	31000 l/min
Switching time on	62 ms
Switch-on time for fluids	2100 ms
Switching time off	21 ms
Switch-off time for fluids	2800 ms
b value	0.68
C value	110 l/sbar
Note on materials	RoHS-compliant
LABS (PWIS) conformity	VDMA24364 zone III
Material housing	Brass
Material number housing	2.0402
Material seals	NBR
Material plunger tube	High-alloy steel
Product weight	3800 g
CE mark (see declaration of conformity)	In accordance with EU Pressure Equipment Directive
UKCA marking (see declaration of conformity)	to UK Pressure Equipment Regulations
Corrosion resistance class CRC	1 - Low corrosion stress
Max. tightening torque for cover screw	30 Nm
Max. tightening torque for connecting thread	620 Nm
Max. tightening torque for coil fastening	2 Nm