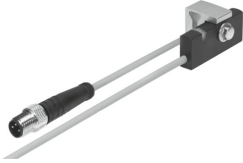


Proximity sensor SMT-C1-PS-24V-K-0,3-M8D

Part number: 571342

FESTO



[General operating condition](#)

Data sheet

| Feature | Value |
|------------------------------------------------------|------------------------------------------------------------------------|
| Design | Block design |
| Based on standard | EN 60947-5-2 |
| Symbol | 00991153 |
| Approval | RCM |
| CE mark (see declaration of conformity) | To EU EMC Directive In accordance with EU RoHS Directive |
| UKCA marking (see declaration of conformity) | To UK RoHS instructions |
| Note on materials | RoHS compliant Free of halogen |
| Instructions on use | Support / actuator-sensor overview "The right sensor for the actuator" |
| Measured variable | Position |
| Measuring principle | Magneto-inductive |
| Ambient temperature | -20 °C ... 70 °C |
| Switching output | PNP |
| Switching element function | N/O contact |
| Hysteresis | ≤2 mm |
| Switch-on time | ≤0.5 ms |
| Switch-off time | ≤0.5 ms |
| Max. output current | 200 mA |
| Max. switching capacity DC | 6 W |
| Voltage drop | <1.8 V |
| Inductive protective circuit | Adapted to MZ, MY, ME coils |
| Min. load current | 0 mA |
| Off-state current | <0.1 mA |
| Short circuit current rating | Yes |
| Overload protection | Yes |
| Rated operational voltage DC | 24 V |
| Operational voltage range DC | 10 V ... 30 V |
| Residual ripple | 10% |
| Reverse polarity protection | For all electrical connections |
| Electrical connection 1, connection type | Cable with plug |
| Electrical connection 1, connector system | M8x1, A-coded, to EN 61076-2-104 |
| Electrical connection 1, number of connections/cores | 3 |
| Electrical connection 1, type of mounting | Rotatable |
| Electrical connection 1, compatible type of mounting | Compatible with rotatable/non-rotatable screw-type lock |
| Electrical connection 1, connection pattern | 00991155 |

| Feature | Value |
|---------------------------------------|--------------------------------------------------------------------|
| Connection outlet orientation | In-line |
| Material electrical contact | Gold-plated brass |
| Material screw-type lock | Brass, nickel-plated |
| Cable length | 0.3 m |
| Cable sheath colour | Grey |
| Material cable sheath | TPE-O |
| Type of mounting | Clamped |
| Tightening torque | 1.2 Nm |
| Mounting position | Any |
| Product weight | 24.4 g |
| Housing colour | Black |
| Material housing | Wrought aluminium alloy TPE-U(PU) High-alloy stainless steel |
| Switching status indication | Yellow LED |
| Ambient temperature with moving cable | -20 °C ... 70 °C |
| Degree of protection | IP65 IP68 To IEC 60529 |
| LABS (PWIS) conformity | VDMA24364-B2-L |
| Suitable for use with food | See supplementary material information |