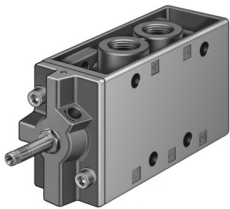


Solenoid valve MFH-5-1/2

Part number: 6420

FESTO



 [General operating condition](#)

Data sheet

Feature	Value
Valve function	5/2-way, single solenoid
Type of actuation	Electrical
Construction width	52 mm
Standard nominal flow rate (standardised to DIN 1343)	3700 l/min
pneumatic working port	G1/2
Operating voltage	Via solenoid coil, must be ordered separately
Operating pressure	0.2 MPa ... 0.8 MPa
Operating pressure	2 bar ... 8 bar
Design	Poppet seat
Type of reset	Mechanical spring
Approval	c UL us - Recognised (Oil)
Degree of protection	IP65
Nominal size	14 mm
Grid dimension	69 mm
Exhaust-air function	Can be throttled
Sealing principle	Soft
Mounting position	Any
Manual override	Detenting
Type of piloting	Piloted
Flow direction	Non-reversible
Symbol	00991035
lap	Underlap
b value	0.32
Switching time off	150 ms
Switching time on	21 ms
Max. positive test pulse with 0 signal	2200 µs
Max. negative test pulse with 1 signal	3700 µs
Characteristic coil data	See solenoid coil, to be ordered separately
Operating medium	Compressed air to ISO 8573-1:2010 [7:4:4]
Note on operating and pilot medium	Lubricated operation possible (in which case lubricated operation will always be required)
Corrosion resistance class CRC	1 - Low corrosion stress
LABS (PWIS) conformity	VDMA24364-B1/B2-L
Storage temperature	-20 °C ... 60 °C
Media temperature	-10 °C ... 60 °C
Ambient temperature	-5 °C ... 40 °C

Feature	Value
Product weight	1135 g
Electrical connection	Via F coil, to be ordered separately
Type of mounting	On manifold rail With through-hole
Pilot exhaust port 84	M5
Pneumatic connection, port 1	G1/2
Pneumatic connection, port 2	G1/2
Pneumatic connection, port 3	G1/2
Pneumatic connection, port 4	G1/2
Pneumatic connection, port 5	G1/2
Note on materials	RoHS compliant
Material seals	NBR TPE-U(PU)
Material housing	Die-cast aluminium