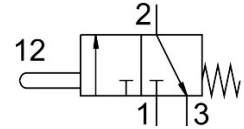


# Stem actuated valve V-3-1/4-B

Part number: 6808

FESTO



[PDF](#) General operating condition

## Data sheet

Feature	Value
Valve function	3/2-way, single solenoid, closed
Type of actuation	Mechanical
Standard nominal flow rate (standardised to DIN 1343)	600 l/min
pneumatic working port	G1/4
Operating pressure	-0.95 bar ... 10 bar
Design	Poppet seat
Nominal size	7 mm
Type of piloting	Direct
Symbol	00991095
Explosion protection	Zone 1 (ATEX) Zone 2 (ATEX) Zone 21 (ATEX) Zone 22 (ATEX)
LABS (PWIS) conformity	VDMA24364-B1/B2-L
Ambient temperature	-10 °C ... 60 °C
Actuating force	70 N
Product weight	130 g
Type of mounting	With through-hole
Pneumatic connection, port 1	G1/4
Pneumatic connection, port 2	G1/4
Pneumatic connection, port 3	G1/4
Material seals	NBR
Material housing	Die-cast aluminium