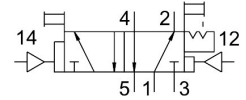


# Pneumatic valve JDH-5-1/8

Part number: 8824

FESTO



[General operating condition](#)

## Data sheet

| Feature   | Value  |
|---|--|
| Valve function  | 5/2-way, bistable, dominant  |
| Type of actuation                                     | Pneumatic  |
| Construction width                                    | 26 mm  |
| Standard nominal flow rate (standardised to DIN 1343) | 600 l/min  |
| pneumatic working port                                | G1/8   |
| Operating pressure                                    | 0 MPa ... 1 MPa  |
| Operating pressure                                    | 0 bar ... 10 bar   |
| Design  | Poppet seat  |
| Nominal size  | 5 mm   |
| Grid dimension  | 27 mm  |
| Exhaust-air function                                  | Can be throttled   |
| Sealing principle                                     | Soft   |
| Mounting position                                     | Any  |
| Type of piloting                                      | Direct   |
| Pilot air supply                                      | External   |
| Flow direction  | Non-reversible   |
| Symbol  | 00995764   |
| lap   | Underlap   |
| Pilot pressure  | 0.23 MPa ... 1 MPa   |
| Pilot pressure  | 2.3 bar ... 10 bar   |
| Max. switching frequency                              | 12 Hz  |
| Switching time off                                    | 16 ms  |
| Switching time on                                     | 9 ms   |
| Switching time reversal                               | 7 ms   |
| Operating medium                                      | Compressed air to ISO 8573-1:2010 [7:4:4]  |
| Note on operating and pilot medium                    | Lubricated operation possible (in which case lubricated operation will always be required) |
| Corrosion resistance class CRC                        | 1 - Low corrosion stress   |
| LABS (PWIS) conformity                                | VDMA24364-B1/B2-L  |
| Storage temperature                                   | -20 °C ... 60 °C   |
| Media temperature                                     | -10 °C ... 60 °C   |
| Ambient temperature                                   | -10 °C ... 60 °C   |
| Product weight  | 330 g  |
| Type of mounting                                      | On manifold rail<br>With through-hole  |
| Pilot air port 12                                     | G1/8   |

| <b>Feature</b>               | <b>Value</b>       |
|------------------------------|--------------------|
| Pilot air port 14            | G1/8               |
| Pneumatic connection, port 1 | G1/8               |
| Pneumatic connection, port 2 | G1/8               |
| Pneumatic connection, port 3 | G1/8               |
| Pneumatic connection, port 4 | G1/8               |
| Pneumatic connection, port 5 | G1/8               |
| Note on materials            | RoHS compliant     |
| Material seals               | NBR<br>TPE-U(PU)   |
| Material housing             | Die-cast aluminium |