

Proportional pressure regulator VPPM

With added dimensions: Fast, universal, precise

FESTO



A new dimension ...

... in proportional pressure regulators, namely the VPPM. The right parameters for every application – simply select the desired regulator characteristics from 3 presets at the press of a button. No need for specialists: Reliable regulation – thanks to the two-stage regulation action with Multi-Sensor Control.



Total individuality

Our modular system for the VPPM adapts to meet your needs precisely, for maximum flexibility with regard to electronic, pneumatic and mechanical components.

Multi sensor control

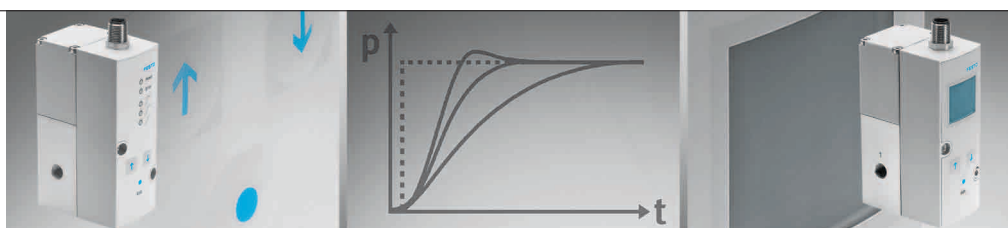
Integrated sensors for best regulation quality and robust regulator behaviour. The key feature: Temperature compensation – no pressure drift due to temperature changes!

Flexibility

In-line or flange versions, current- or voltage actuated, connection to field bus/Ethernet via a CPX terminal. Meets all needs, ranging from basic performance to a high-tech product. An absolute first!

Diagnostics

The VPPM provides an electrical signal corresponding to the pressure reached. It is also able to diagnose when a setpoint has not been reached. A CPX terminal allows all values to be controlled and monitored remotely.



Reliable regulation - on the button ... robust: with 3 presets

... variable: via the display!

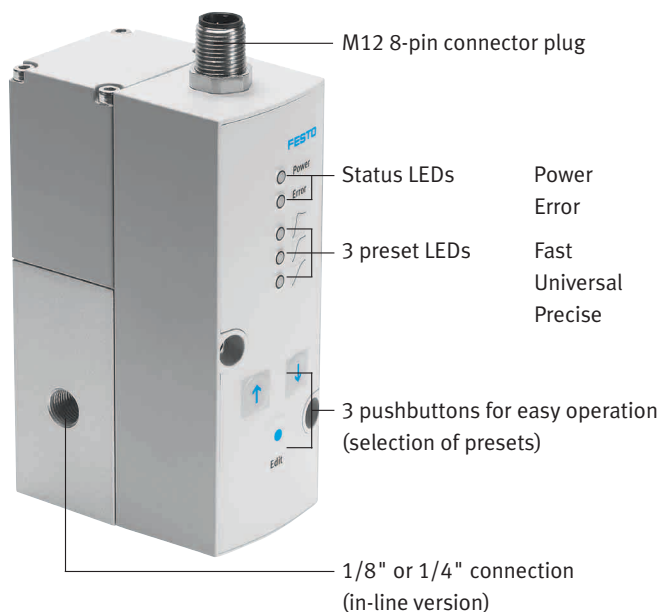
241.1.PSI →

Product Short Information

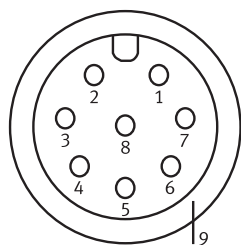
Proportional pressure regulator VPPM

With added dimensions: Fast, universal, precise

Operator interface



Pin allocation for M12 8-pin plug

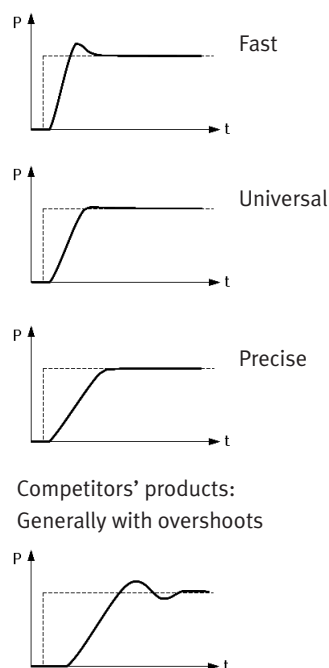


- 1 Digital input 1
- 2 24 VDC
- 3 Setpoint - (-w)
- 4 Setpoint + (+w)
- 5 Digital input 2
- 6 Actual-value output (x)
- 7 0 VDC (GND)
- 8 Digital output (24 VDC)
- 9 Metal housing

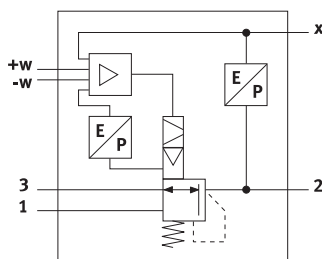
Main application

Can be used universally, for high precision or high speed at the press of a button. Or for processes requiring precise flexible local regulation of force and pressure. Robust regulator characteristics ensure optimum results.

Only with Festo: Robust regulation



Operating principle: Cascade control



| Technical data | | | | | |
|----------------------|--|------|------|-------------|-------|
| Valve function | 3/2-way proportional pressure regulator | | | | |
| Flow rate in l/min. | | ND 6 | ND 8 | ND 8 flange | ND 12 |
| | 2 bar | 380 | 650 | 450 | 2000 |
| | 6 bar | 900 | 1750 | 1050 | 4500 |
| | 10 bar | 1400 | 2750 | 1650 | 7000 |
| Pressure range | 0,02 ... 2 bar / 0,06 ... 6 bar / 0,1 ... 10 bar | | | | |
| Switching output | PNP or NPN | | | | |
| Pneumatic connection | G1/8", 1/8 NPT, G1/4", 1/4 NPT, G1/2", 1/2 NPT, Flange | | | | |
| Mounting | In-line (1/8", 1/4" or 1/2") or flange (only ND 6 and ND 8) | | | | |
| Electrical interface | M12 plug, 8-pin, all connections prot. against short circuit / reverse polarity | | | | |
| Diagnostic function | Actual value | | | | |
| | Setpoint reached | | | | |
| | Upper/lower limit value reached | | | | |
| 3 Presets | Fast, universal, precise | | | | |
| Displays/controls | VPPM-LED: Regulator presets selectable by pushbuttons | | | | |
| | VPPM-LCD: Numerous editing functions | | | | |
| Connecting cable | Pre-assembled cables 2, 5 or 10 m with open cable ends | | | | |
| | Y connecting cable for direct connection to analogue inputs/outputs (CPX) with IP65/67 | | | | |

Festo AG & Co. KG

Ruiter Strasse 82
73734 Esslingen
www.festo.com
Tel. +49 711 347 0
Fax +49 711 347 21 44
service_international@festo.com