

# CoDeSys embedded controller for CPX CPX-CEC

FESTO



## CoDeSys IEC 61131-3!

**Programming in a world language, automation and profit - freely in accordance with IEC 61131-3.** For standardised pre-processing: CPX-CEC. As an intelligent remote I/O terminal in IP65/IP67 directly on the machine, it reduces installation costs. It's ideally adapted for CPX and motion applications with up to 31 electric drives.

**More performance, lower costs**  
CPX-CEC: improved cycle times – more connectable actuators. The integrated CANopen Master allows pneumatic and electric axes to be intelligently actuated. The comprehensive CoDeSys library takes care of diagnostics and condition monitoring.

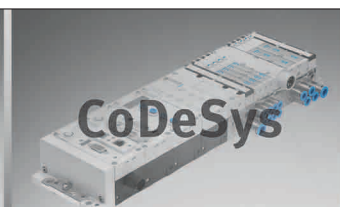
**Softmotion**  
For CPX-CEC-M1, the controller can perform a 2.5-dimensional interpolation of electrically movable axes. Flexible electronic camming functions included.

**Simple, yet efficient: decentralised structures**  
The modular I/O system with up to 512 I/O and its CAN-Master functionality offers complete flexibility. Whether it's an open- and closed-loop control stand-alone for economical automation (e.g. of manual work stations) or on-site remote control with pre-processing.

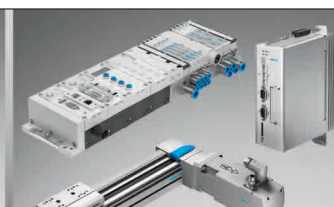
**Simply unique in IP65**  
The holistic automation platform for standard, proportional and servo-pneumatics, sensors and motion control in IP65. Including easy commissioning.



Multi-purpose



Simple and reliable



Unique platform

210.18.PSI →

Product Short Information

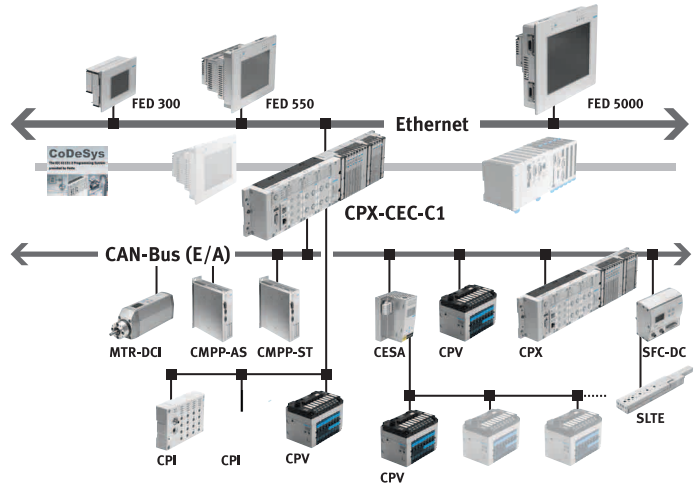
# CoDeSys embedded controller for CPX CPX-CEC

## CPX-CEC functions

- Easy control from valve terminal configurations with MPA, VTSA
- Connection to all fieldbuses as remote controller and for pre-processing
- Activation of electric drives as individual axes via CANopen
- Diagnostics with flexible monitoring possibilities for pressure, flow rate, cylinder run time, air consumption, early warnings and visualisation options

- Activation of decentralised installation systems on the basis of CPI
- Activation of applications of proportional pneumatics
- Servo-pneumatic applications
- AS-interface control via Gateway

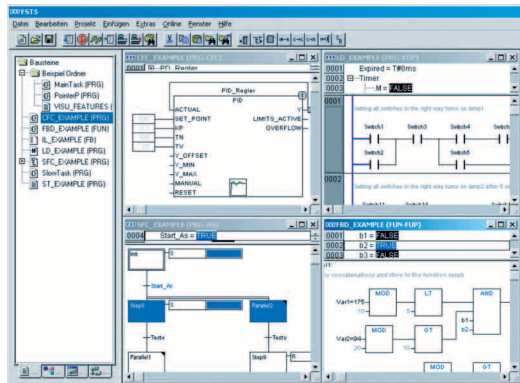
CPX-CEC variants:  
 RS232: CPX-CEC  
 CANopen master: CPX-CEC-C1  
 Softmotion: CPX-CEC-M1



## Software platform CoDeSys

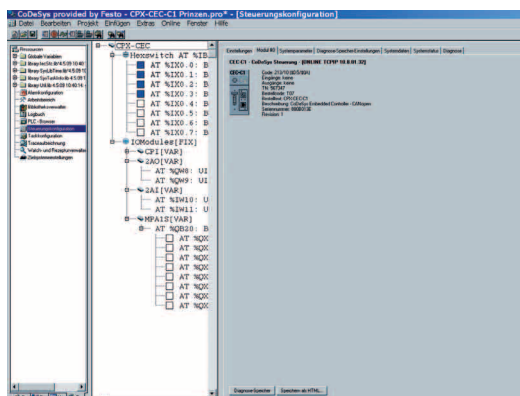
CoDeSys makes your life easier with simple commissioning, fast programming and parameterisation

– standardised programming of control systems to IEC 61131-3 standard.



Technical data	
Processor	32 bit MIPS, 400 MHz
User memory	20 MB flash/4 MB project
Remanent memory	32 KB
Communication network	Ethernet 10/100 Base-T
Fieldbus master	CANopen optional, only with CPX-CEC-C1
PLC operating system	CoDeSys 2.3 Full RTS
Communication interface	RS 232 optional, only with CPX-CEC
Diagnostics	Handheld for CPX terminal can be connected
Operation	All FEDs can be connected via Ethernet
Visualisation	OPC server for connection to any SCADA packages
Networking	All fieldbus modules of the CPX terminal: Profibus, ProfiNet, Ethernet IP, DeviceNet Modbus TCP, CANopen, Interbus etc.
EA	All modules of the CPX terminal are supported
Softmotion	8 axes for interpolation operation

## Project engineering with control configuration inside CoDeSys



**Festo AG & Co. KG**

Ruiter Strasse 82  
 73734 Esslingen  
 www.festo.com  
 Tel. +49 711 347-0  
 Fax +49 711 347-2144  
 service\_international@festo.com