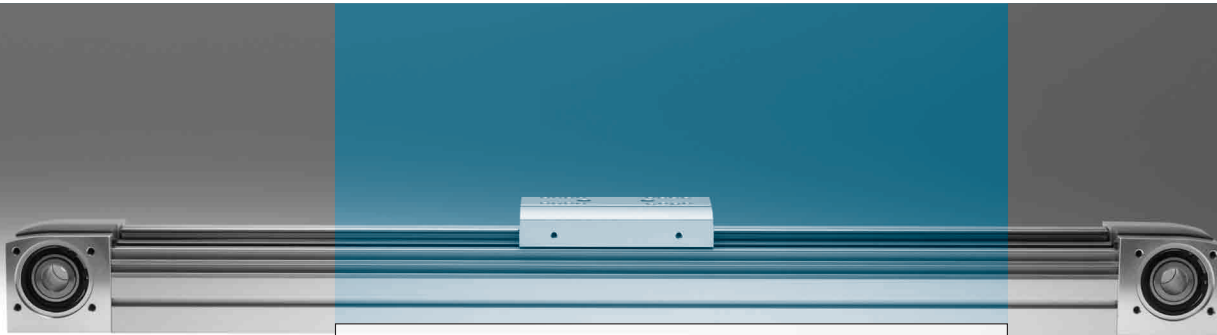


Toothed belt and spindle axes EGC

FESTO



Strong performer!

The comprehensive electrical axis range EGC is available in numerous variants. The many advantages include: high dynamic response and speed, newly defined rigidity and high force resistance. Furthermore the new mechatronic modular axis range can be implemented as an individual system solution as well as a complete system solution.

Versatile

Axes from the EGC product range are available in toothed belt as well as spindle variants. Different spindle pitches, numerous sizes and slide variants and protected guides open up a broad range of applications.

Strong performer

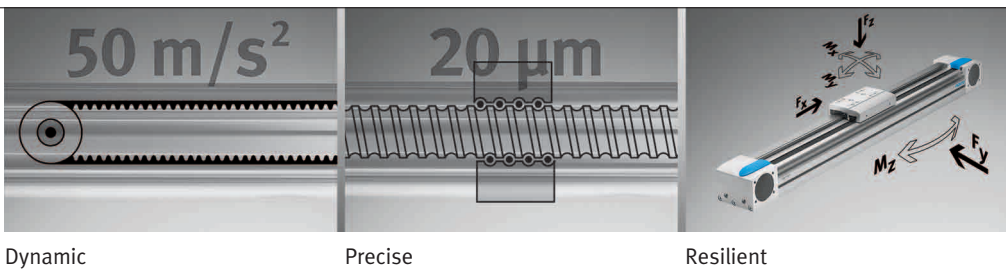
Generously sized profiles with an optimised cross section afford the drives maximum rigidity and load capacity. Speed, acceleration and torque resistance set a new standard.

Efficient

In addition to the technical data, the EGC is a winner with its excellent price-performance ratio. Due to the EGC's high performance it is possible, particularly with spindle axes, to use a smaller size.

Quicker planning

The integration of the EGC in the Festo multi-axis and modular positioning system offers standardized interfaces for other drives and motor packages. Design using the positioning drives software additionally simplifies configuration and eliminates costly oversizing.



Dynamic

Precise

Resilient

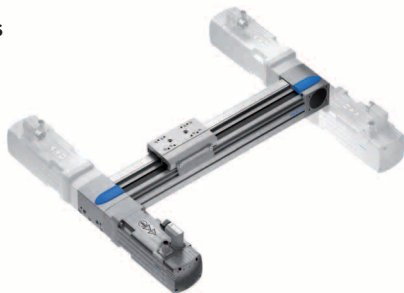
132.1.PSI →

Product Short Information

Toothed belt and spindle axes EGC

Toothed belt and spindle axes EGC: the latest design for

- High speeds and feed forces
- Maximum rigidity
- High loads and torques
- Minimum distance between load and guide centre
- Choice of motor assembly



Flexible motor connection on ECG-TB

- Motor can be attached on 4 sides, freely selectable
- Subsequent modifications possible at any time

The benefits to you:

Define a standard attachment variant with one part number and modify to alternative positions as and when needed

Slide variants:



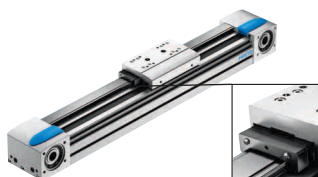
Extended slide

- Longer guide
- For a greater axial torque
- More mounting options



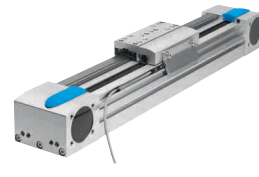
Second slide

- 1 active and 1 passive (freely movable) slide
- Adjustable, extended guide
- For greater axial and lateral torques
- More mounting options



Protected slide

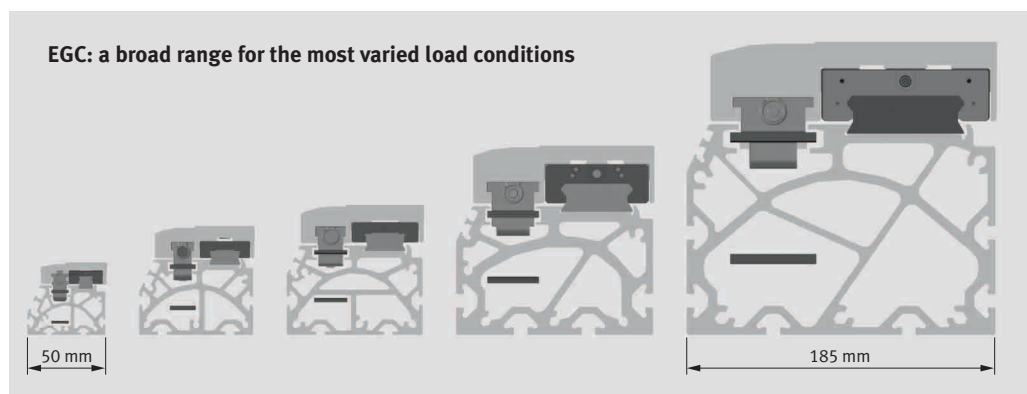
- Scrapers on both sides of the slide
- Removes dirt particles and liquids from the external guide
- For use in aggressive environments



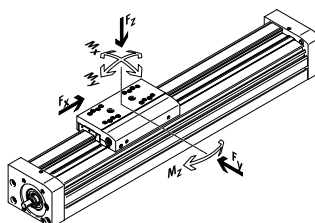
Safety thanks to optional sensing

- Inductive proximity sensor SIES-8M
- Flush mounting of up to 2 sensors in the profile slot – no protruding edges outside of the drive cross section
- Maximum of 4 sensors
- Output status display: 2 yellow LEDs for better visibility, regardless of approach direction
- Repetition accuracy $\leq \pm 0.05$ mm (radial)

EGC: a broad range for the most varied load conditions



Technical data	EGC-...-BS-KF with spindle drive	EGC-...-TB-KF with toothed belt drive
Sizes	70, 80, 120, 185	50, 70, 80, 120, 185
Strokes [mm]	50 ... 3.000	Max. 10.000
Max. speed [m/s]	2	5
Max. acceleration [m/s ²]	15	50
Max. feed force [N]	3.000	2.500
Torques M _x [Nm]	529	
Torques M _y /M _z [Nm]	1.820	



Festo AG & Co. KG

Ruiter Strasse 82
73734 Esslingen
www.festo.com
Tel. +49 711 347 0
Fax +49 711 347 21 44
service_international@festo.com