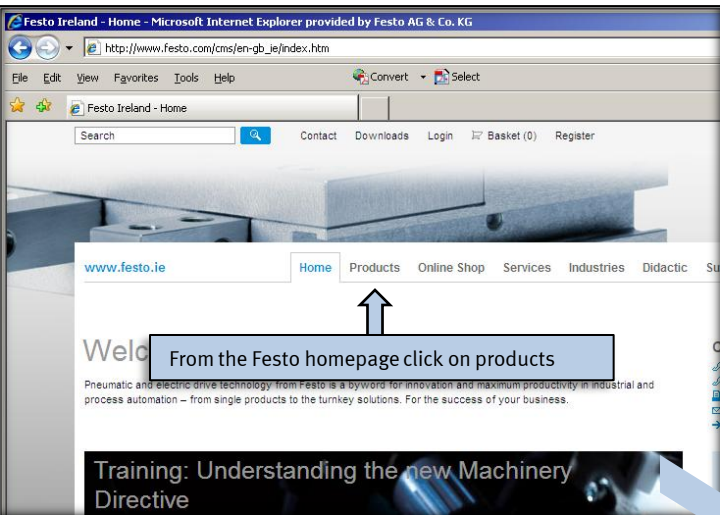


NEW Festo Product Configurator – faster and easier

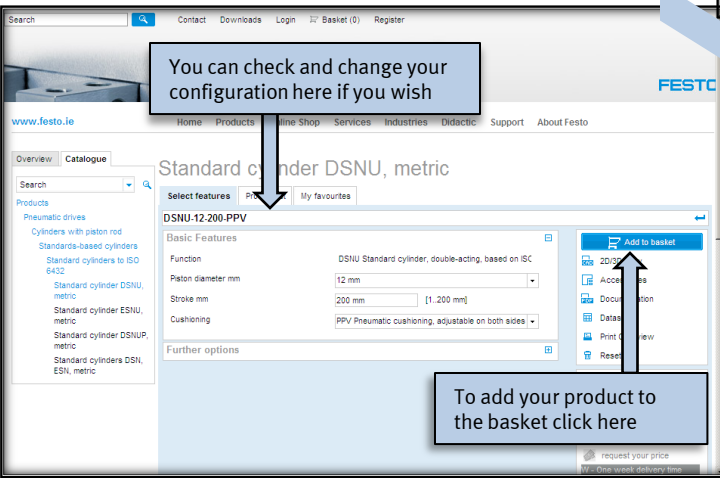
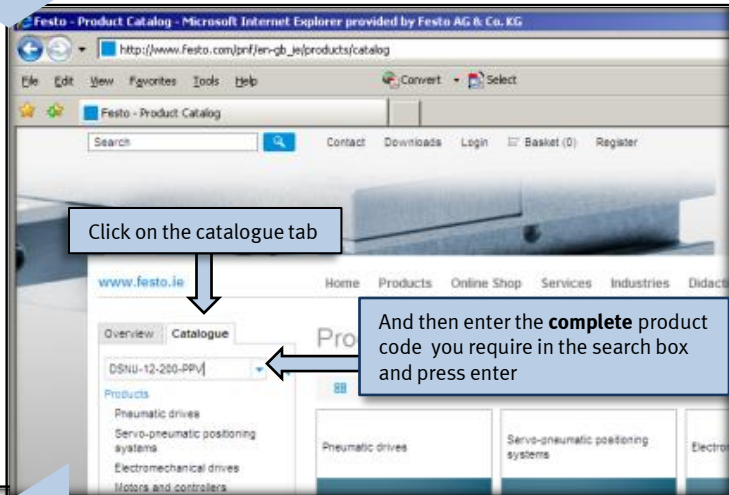
How to put a product code into the basket



Go to the product area of the Festo website
www.festo.com/gb
or
www.festo.co.uk

If you want to view pricing information you need to Login using your password, new users need to apply

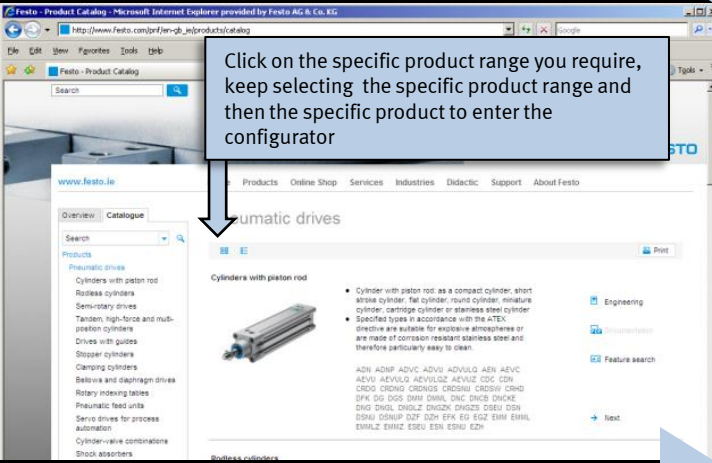
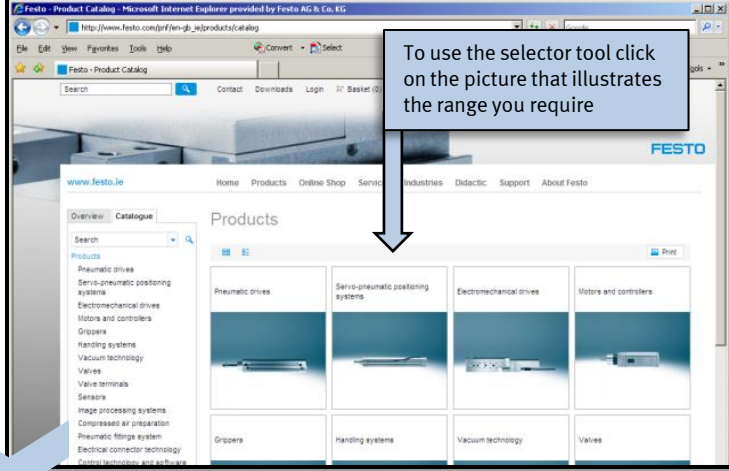
Go to the Catalogue and type in your complete order code e.g. DSNU-12-200-PPV



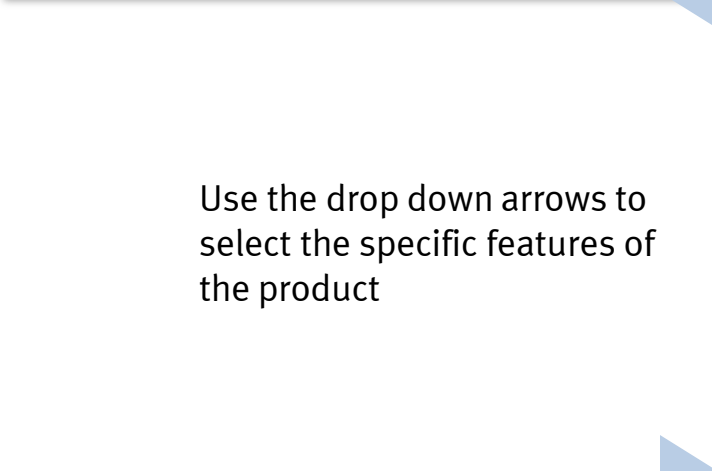
Then just add to basket. If you want to change anything, you can do it here.

How you select a product for your application

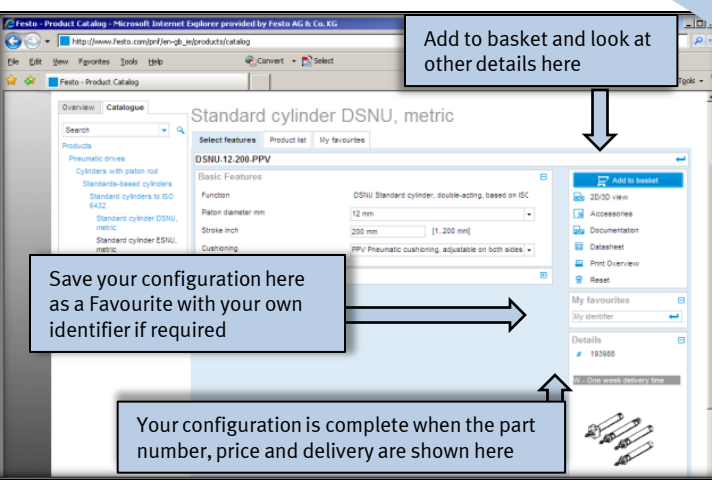
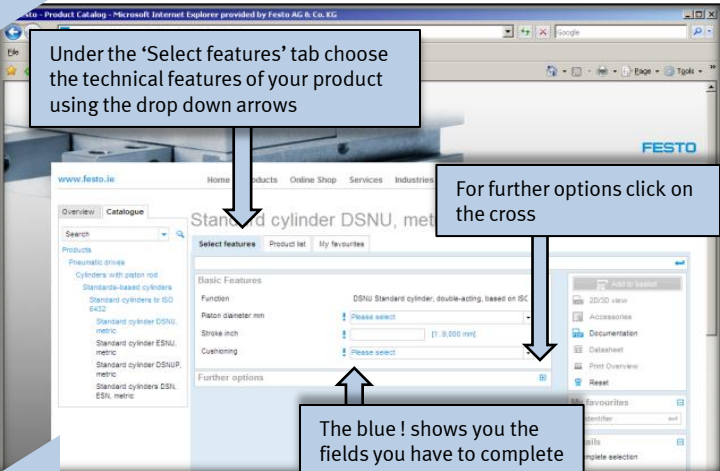
Use the Festo **Selector Tool**



Drill down through the product range until you get to the specific product you require



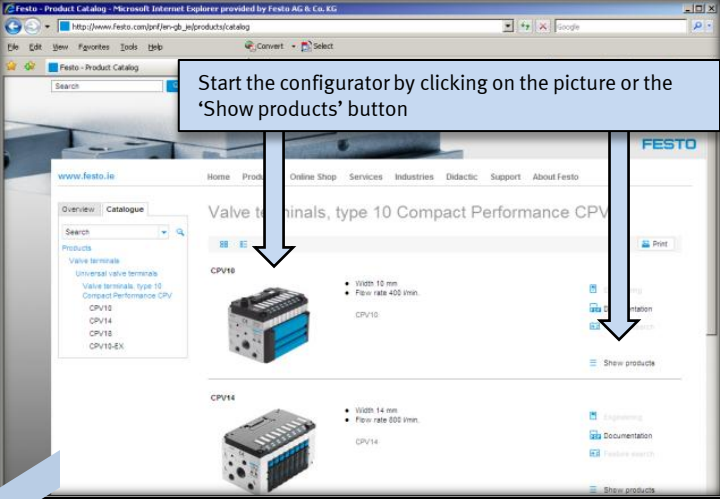
Use the drop down arrows to select the specific features of the product



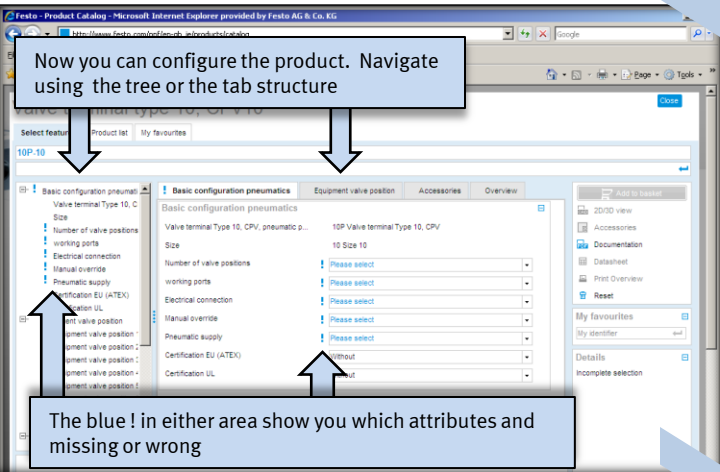
Add to basket, save as favourite, obtain CAD drawings etc. once you have completed your configuration

To configure valve terminals and air preparation products

No need to put the product into the basket first



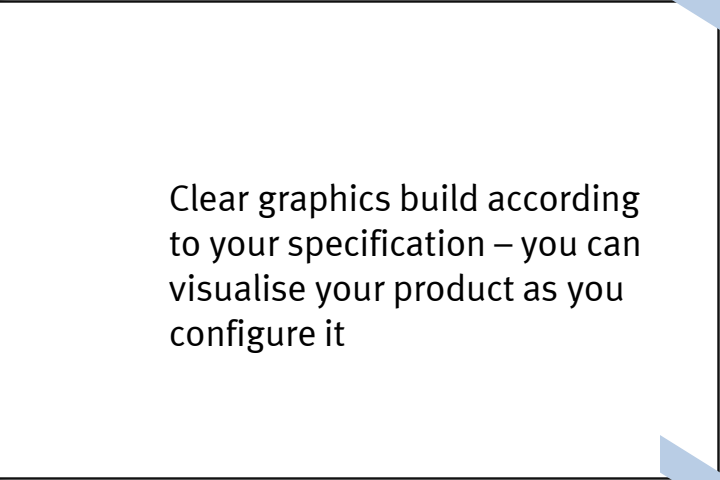
Start the configurator by clicking on the picture or the 'Show products' button



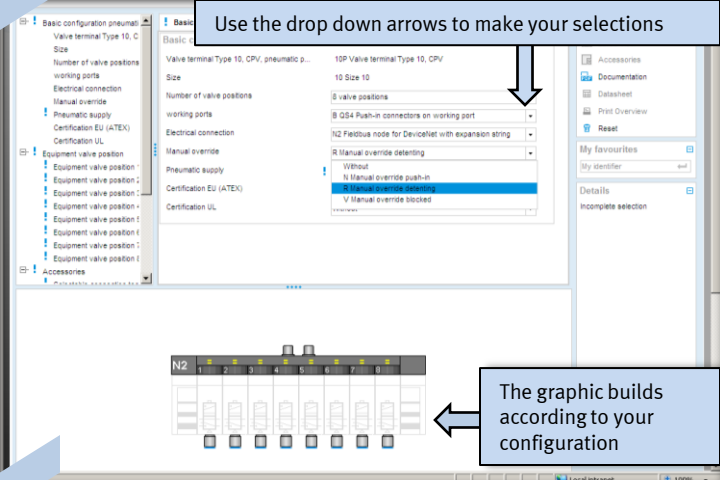
Now you can configure the product. Navigate using the tree or the tab structure

The blue ! in either area show you which attributes and missing or wrong

There is an easy to follow tree or tab structure for configuration with clear information on incorrect or incomplete codes

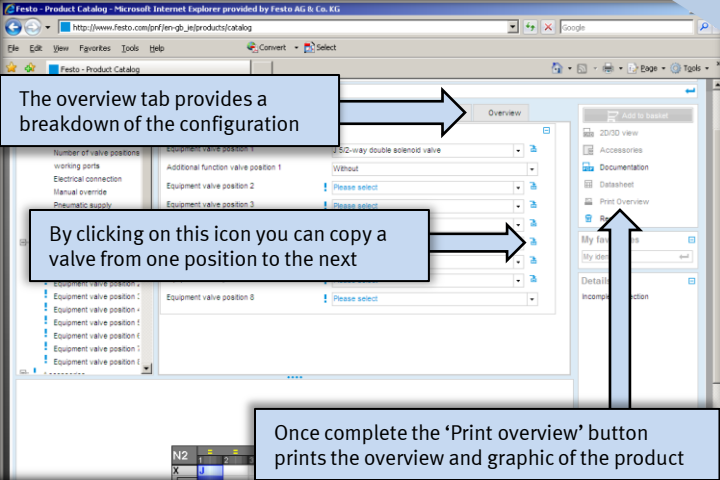


Clear graphics build according to your specification – you can visualise your product as you configure it



Use the drop down arrows to make your selections

The graphic builds according to your configuration



The overview tab provides a breakdown of the configuration

By clicking on this icon you can copy a valve from one position to the next

Once complete the 'Print overview' button prints the overview and graphic of the product

The overview displays the breakdown of the code and the graphic. NEW - you can print and save the overview and picture

NEW Festo Product Configurator – faster and easier

Additional user friendly functions

Product comparisons

The product tab gives you the opportunity to compare and sort all the product options

The Product list tab shows all the variants of the series with the most important technical features

Click on this icon to re-enter the configurator

Click on any column heading to sort by that column

| Part number | Order code 1 | Description |
|-------------|-------------------|-------------------|
| 559263 | DSNU-16-25-PPS-A | Standard cylinder |
| 559234 | DSNU-16-40-PPS | Standard cylinder |
| 559264 | DSNU-16-40-PPS-A | Standard cylinder |
| 559235 | DSNU-16-50-PPS | Standard cylinder |
| 559265 | DSNU-16-50-PPS-A | Standard cylinder |
| 559236 | DSNU-16-80-PPS | Standard cylinder |
| 559266 | DSNU-16-80-PPS-A | Standard cylinder |
| 559237 | DSNU-16-100-PPS | Standard cylinder |
| 559267 | DSNU-16-100-PPS-A | Standard cylinder |
| 559238 | DSNU-16-125-PPS | Standard cylinder |
| 559268 | DSNU-16-125-PPS-A | Standard cylinder |

Automatic code completion

If you know the product code (or part of it) – type it into the box at any point for the configurator to do some of the work for you

To compare products - use 'Ctrl' on your keyboard to select more than one line and click on 'Select action' then product compare

Type in a product code manually here

To compare products - use 'Ctrl' on your keyboard to select more than one line and click on 'Select action' then product compare

Favourites

Favourites can be any product and saved at any time with your own identifier. Access them directly under the product tree

Your favourites can be managed from this tab

Your favourites can be accessed directly from under the product tree