

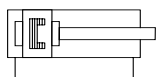
Standard cylinders DSNU-...-RR-SA

Ø 8, 10, 16, 20, 25, 32, 40, 50, 63 mm, stroke 10 to 500 mm

Cleanroom class ISO 4 (FS209E class 10)

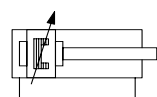
Double acting cylinder with flexible cushioning rings in the end positions and contact-less sensing.

DSNU-...-P-A-RR-SA
DSNU-...-P-A-MQ-RR-SA
DSNU-...-P-A-MA-RR-SA



Double acting cylinder with adjustable cushioning rings in the end positions and contact-less sensing.

DSNU-...-PPV-A-RR-SA
DSNU-...-PPV-A-MQ-RR-SA



- Optimum graded range of piston diameters and stroke lengths
- Three different end caps means numerous functional and space saving design
- Good running performance and long service life thanks to smooth, hard cylinder bore
- Cylinder barrel made of stainless steel
- With flexible cushioning rings in the end positions
- With adjustable end-position cushioning at both ends
- With or without contact less end position sensing

DSNU-...-RR-SA
(basic version)



Order example:

Part no: 15024262
 Type: DSNU-20-200-PPV-A-RR-SA
 Double acting cylinder Ø 20 mm, stroke 200 mm, with adjustable cushioning rings in the end positions and contact-less sensing.

DSNU-...-MQ-RR-SA
(Lateral supply port at rear)



DSNU-...-MA-RR-SA
(Axial supply port at rear)



Type	Part no.	Piston Ø	Stroke	Thrust at 6 bar	Return force	Air cushioning	Connection	Bracket for SME-8 sensor	Part no.
[Basic version]		[mm]	[mm]	[N]	[N]	[cushioning length]			
DSNU-8-...-P-A-RR-SA	15024250	8	10 ...100	30	23	Damper	M5	SMBR-8-8-RR	15025013
DSNU-10-...-P-A-RR-SA	15024251	10	10 ...100	47	40	Damper	M5	SMBR-8-10-RR	15025014
DSNU-12-...-P-A-RR-SA	15024256	12	10 ...200	68	51	Adjustable [9 mm]	M5	SMBR-8-12-RR	15025015
DSNU-16-...-PPV-A-RR-SA	15024260	16	10 ...200	121	104	Adjustable [12 mm]	M5	SMBR-8-16-RR	15025016
DSNU-20-...-PPV-A-RR-SA	15024262	20	10 ...320	189	158	Adjustable [15 mm]	G1/8	SMBR-8-20-RR	15025017
DSNU-25-...-PPV-A-RR-SA	15024265	25	10 ...500	295	247	Adjustable [17 mm]	G1/8	SMBR-8-25-RR	15025018
DSNU-32-...-PPV-A-RR-SA	15083882	32	10 ...500	483	415	Adjustable [14 mm]	G1/8	SMBR-8-32-RR	15083956
DSNU-40-...-PPV-A-RR-SA	15083883	40	10 ...500	753	633	Adjustable [18 mm]	G1/4	SMBR-8-40-RR	15083957
DSNU-50-...-PPV-A-RR-SA	15083884	50	10 ...500	1178	990	Adjustable [20 mm]	G1/4	SMBR-8-50-RR	15083958
DSNU-63-...-PPV-A-RR-SA	15083885	63	10 ...500	1870	1682	Adjustable [21 mm]	G3/8	SMBR-8-63-RR	15083959

Standard cylinders DSNU-...-RR-SA

Ø 8, 10, 16, 20, 25, 32, 40, 50, 63 mm, stroke 10 to 500 mm

Cleanroom class ISO 4 (FS209E class 10)

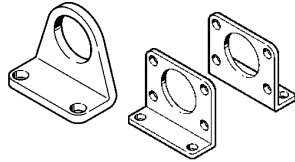
Accessories

Proximity sensor for fitting in 8 mm slot (Page 40)
SME-8...

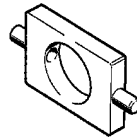


Mounting options

Foot mounting
HBN-... x1
HBN-... x2



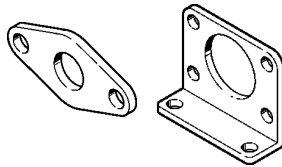
Swivel mounting
WBN-...



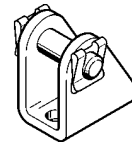
Mounting bracket for proximity sensor
SMBR-8-...



Flange mounting
FBN-...



Clevis foot
LBN-...



Technical data	
Medium	Compressed air, filtered (lubricated or unlubricated)
Max. operating pressure	10 bar
Temperature range	-20 ... +80 °C (note operating range of proximity sensor)
Materials	
Cylinder barrel and cover	High alloy stainless steel
Cylinder cover	Aluminum
Piston rod	High alloy steel
Seals	Polyurethane, nitrile rubber

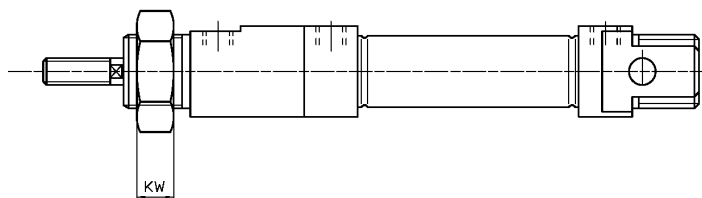
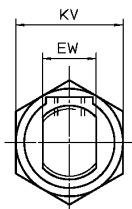
Type [Lateral supply port]	Part no.	Piston Ø [mm]	Stroke [mm]	Type [Axial supply port]	Part no.	Piston Ø [mm]	Stroke [mm]
DSNU-8-...-P-A-MQ-RR-SA	15083886	8	10 ...100	DSNU-8-...-P-A-MA-RR-SA	15083896	8	10 ...100
DSNU-10-...-P-A-MQ-RR-SA	15083887	10	10 ...100	DSNU-10-...-P-A-MA-RR-SA	15083897	10	10 ...100
DSNU-12-...-P-A-MQ-RR-SA	15083888	12	10 ...200	DSNU-12-...-P-A-MA-RR-SA	15083898	12	10 ...200
DSNU-16-...-PPV-A-MQ-RR-SA	15083889	16	10 ...200	DSNU-16-...-P-A-MA-RR-SA	15083899	16	10 ...200
DSNU-20-...-PPV-A-MQ-RR-SA	15083890	20	10 ...320	DSNU-20-...-P-A-MA-RR-SA	15083900	20	10 ...320
DSNU-25-...-PPV-A-MQ-RR-SA	15083891	25	10 ...500	DSNU-25-...-P-A-MA-RR-SA	15083901	25	10 ...500
DSNU-32-...-PPV-A-MQ-RR-SA	15083892	32	10 ...500	DSNU-32-...-P-A-MA-RR-SA	15083902	32	10 ...500
DSNU-40-...-PPV-A-MQ-RR-SA	15083893	40	10 ...500	DSNU-40-...-P-A-MA-RR-SA	15083903	40	10 ...500
DSNU-50-...-PPV-A-MQ-RR-SA	15083894	50	10 ...500	DSNU-50-...-P-A-MA-RR-SA	15083904	50	10 ...500
DSNU-63-...-PPV-A-MQ-RR-SA	15083895	63	10 ...500	DSNU-63-...-P-A-MA-RR-SA	15083905	63	10 ...500

Standard cylinders DSNU-...-RR-SA

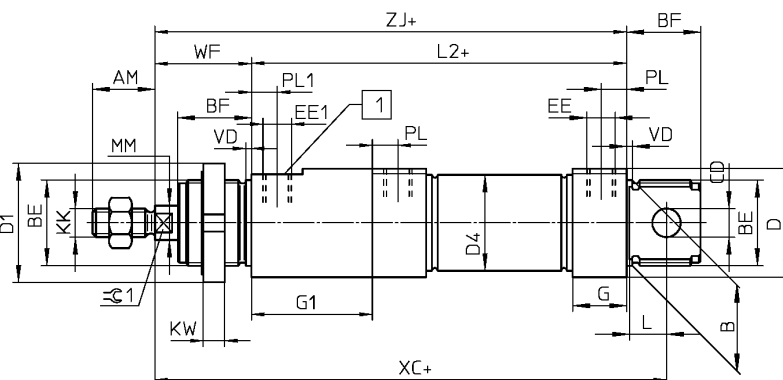
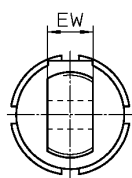
Ø 8, 10, 16, 20, 25, 32, 40, 50, 63 mm, stroke 10 to 500 mm

Cleanroom class ISO 4 (FS209E class 10)

DSNU-8-... to DSNU-25-...
(Basic version)



DSNU-32-... to DSNU-63-...
(Basic version)



1 Vacuum suction port

+ = plus stroke length

Ø [mm]	AM	B Ø h9	BE	BF	CD Ø	D Ø	D1	D4 Ø	EE	EE1	EW	G	G1
8	12	12	M12 x 1.25	15	4	15	-	9.3	M5	M5	8	10	22.5
10	12	12	M12 x 1.25	15	4	15	-	11.3	M5	M5	8	10	22.5
12	16	16	M16 x 1.5	16	6	20	-	13.3	M5	M5	12	10	27.5
16	16	16	M16 x 1.5	17	6	20	-	17.3	M5	M5	12	10	26
20	20	22	M22 x 1.5	20	8	27	-	21.3	G1/8	G1/8	16	16	34
25	22	22	M22 x 1.5	22	8	27	-	26.5	G1/8	G1/8	16	16	36
32	22	30	M30 x 1.5	26	10	38	42	33.6	G1/8	G1/8	16	19	42.5
40	24	38	M38 x 1.5	30	12	46	50	41.6	G1/4	G1/8	18	25	47
50	32	45	M45 x 1.5	33	16	57	60	52.4	G1/4	G1/8	21	25	50
63	32	45	M45 x 1.5	33	16	70	60	65.4	G3/8	G1/8	21	28	50

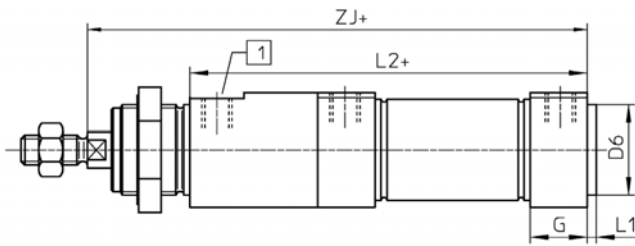
Ø [mm]	KK	KV	KW	L	L2	MM Ø f8	PL	PL1	VD	WF	XC ± 1	ZJ	≈C1
8	M4	19	6	6	68.5	4	6	8	2	19	89.2	87.2	-
10	M4	19	6	6	68.5	4	6	8	2	19	89.2	87.2	-
12	M6	24	8	9	77.5	6	6	8	2	21	101.5	98.5	5
16	M6	24	8	9	82	6	6	6	2	22	108	104	5
20	M8	32	11	12	102	8	8.2	8.2	2	24	129	126	7
25	M10 x 1.25	32	11	12	105.5	10	8.2	8.2	2	28	140	133.2	9
32	M10 x 1.25	-	8	13	112	12	9	8	2	34	160	146	10
40	M12 x 1.25	-	10	15	131.6	16	12	8	3	39	186.6	170.6	13
50	M16 x 1.5	-	10	16	136.2	20	12	8	3	44	197.2	180.2	17
63	M16 x 1.5	-	10	16	144.2	20	13	8	3	45	206.2	189.2	17

Standard cylinders DSNU-...-RR-SA

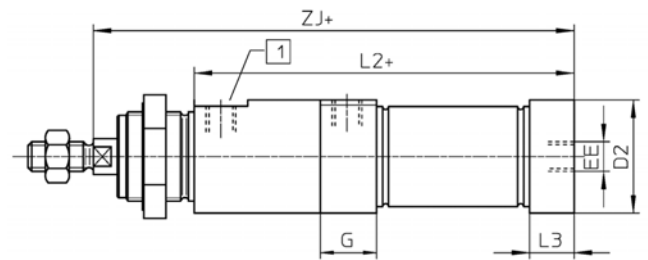
Ø 8, 10, 16, 20, 25, 32, 40, 50, 63 mm, stroke 10 to 500 mm

Cleanroom class ISO 4 (FS209E class 10)

DSNU-...-MQ-RR-SA
(Lateral supply port)



DSNU-...-MA-RR-SA
(Axial supply port)



1 Vacuum suction port

+ = plus stroke length

Ø [mm]	D2 Ø	D6 Ø	EE	G	L1	L2		L3	ZJ	
						MQ	MA		MQ	MA
8	10.5	-	M5	10	-	68.5	66.1	7.6	87.2	84.8
10	12.5	-	M5	10	-	68.5	65.6	7.1	87.2	84.3
12	14.5	-	M5	10	-	77.5	75.2	7.7	98.5	96.2
16	17.5	-	M5	10	-	82	79.7	7.7	104	101.7
20	21.7	-	G1/8	16	-	102	100.5	14.5	126	124.5
25	26.7	-	G1/8	16	-	105.5	102.5	14	133.2	132.5
32	34	30	G1/8	19	3	112	108	15	146	142
40	42	38	G1/4	25	4	131.6	124.6	18	170.6	163.6
50	53	45	G1/4	25	4	136.2	136.2	25	180.2	180.2
63	66	45	G3/8	28	4	144.2	144.2	28	189.2	189.2