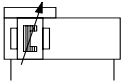


# Pneumatic linear drives DGPL-...-KF-RR-SA

Ø 25, 32, 40 mm, stroke 10 to 1000 mm

Cleanroom class ISO 4 or 5 (FS209E class 10 or 100)

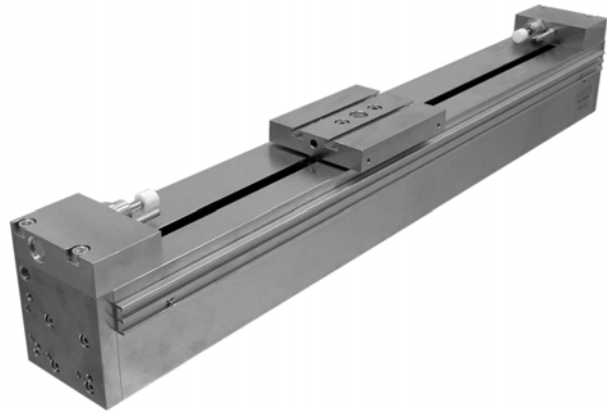
Double acting, pneumatic linear drive units with slide, adjustable end-position cushioning and recirculating ball bearing guides  
**DGPL-...-KF-RR-SA**



- Precision, rigid guide
- Greater flexibility thanks to wide choice of mounting and assembly options
- Variable end-position cushioning systems
- Wide range of options for mounting on drive units
- System product for positioning, handling and assembly technology

**Important technical data:**

- For used in Cleanroom class ISO 4 (FS209E class 10), max. speed should be less than 0.3 m/s
- For used in Cleanroom class ISO 5 (FS209E class 100), max. speed should be less than 1.0 m/s
- To achieved the least particle emission during cleanroom application it is recommended to ensure sufficient damping when the rodless cylinder come to the end of the stroke. This can be achieved by optimising the in-build pneumatic end cushioning or to attach a external shock absorber.



**Order example:**

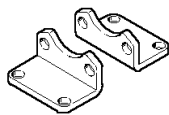
Part no: 15059878  
Type DGPL-32-500-PPV-A-B-KF-RR-SA  
Double acting linear drive, Ø 32 mm, stroke 500 mm, with adjustable end-position cushioning and recirculating ball bearing guides

**Selection criteria:**

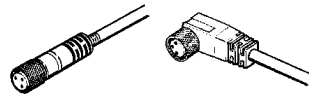
Refer to DKI (Electronic catalogue) or Volume 1 of Pneumatic Drives catalogue.

**Accessories**

Foot mounting  
HNC-40 for DGPL-25-...-RR-SA  
HNC-63 for DGPL-32-...-RR-SA and DGPL-40-...-RR-SA



Sensor cable (Page 40)  
SIM-M8-3...-RR



**Optional packages:**

Part no: 15060240  
Shock absorber package for DGPL-25-...-RR-SA

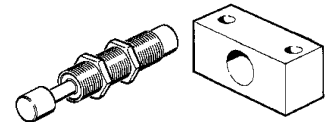
- Shock absorber: 2 x YSR-12-12-C (2x)
- Shock absorber retainer with end stop: 2 x KYP-25-SA

Part no: 15085313

- Shock absorber package for DGPL-32-...-RR-SA
- Shock absorber: 2 x YSR-12-12-C
- Shock absorber retainer with end stop: 2 x KYP-32-SA

Part no: 15060241

- Shock absorber package for DGPL-40-...-RR-SA
- Shock absorber: 2 x YSR-16-20-C
- Shock absorber retainer with end stop: 2 x KYP-40-SA



Type	Part No.	Piston Ø [mm]	Stroke [mm]	Theoretical force at 6 bar [N]	Cushioning length [mm]	Connection
DGPL-25-...-PPV-A-B-KF-RR-SA	15059877	25	100...1000	295	18	G1/8
DGPL-32-...-PPV-A-B-KF-RR-SA	15059878	32	100...1000	483	20	G1/8
DGPL-40-...-PPV-A-B-KF-RR-SA	15059879	40	100...1000	754	30	G1/4

# Pneumatic linear drives DGPL-...-KF-RR-SA

Ø 25, 32, 40 mm, stroke 10 to 1000 mm

Cleanroom class ISO 4 or 5 (FS209E class 10 or 100)

## Optional packages:

Part no: 15060238

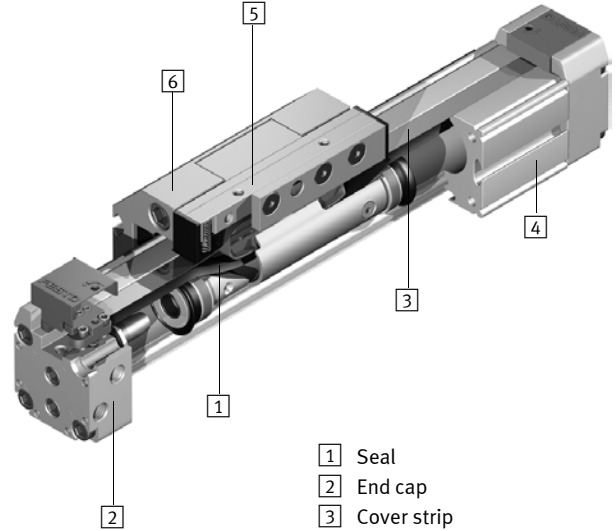
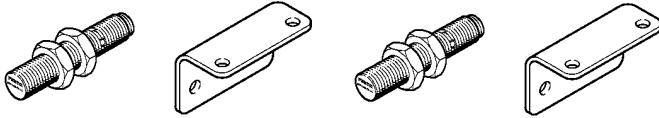
Proximity Sensor package (PNP)

- Proximity Sensor: 2 x SIEN-M8B-PS-S-L
- Switching Lug on slide: SF-25
- Sensor brackets: 2 x HW-18/25-M8
- Slot nuts: 2 x ZVB-8

Part no: 15060239

Proximity Sensor package (NPN)

- Proximity Sensor: 2 x SIEN-M8NB-PS-S-L
- Switching Lug on slide: SF-25
- Sensor brackets: 2 x HW-18/25-M8
- Slot nuts: 2 x ZVB-8



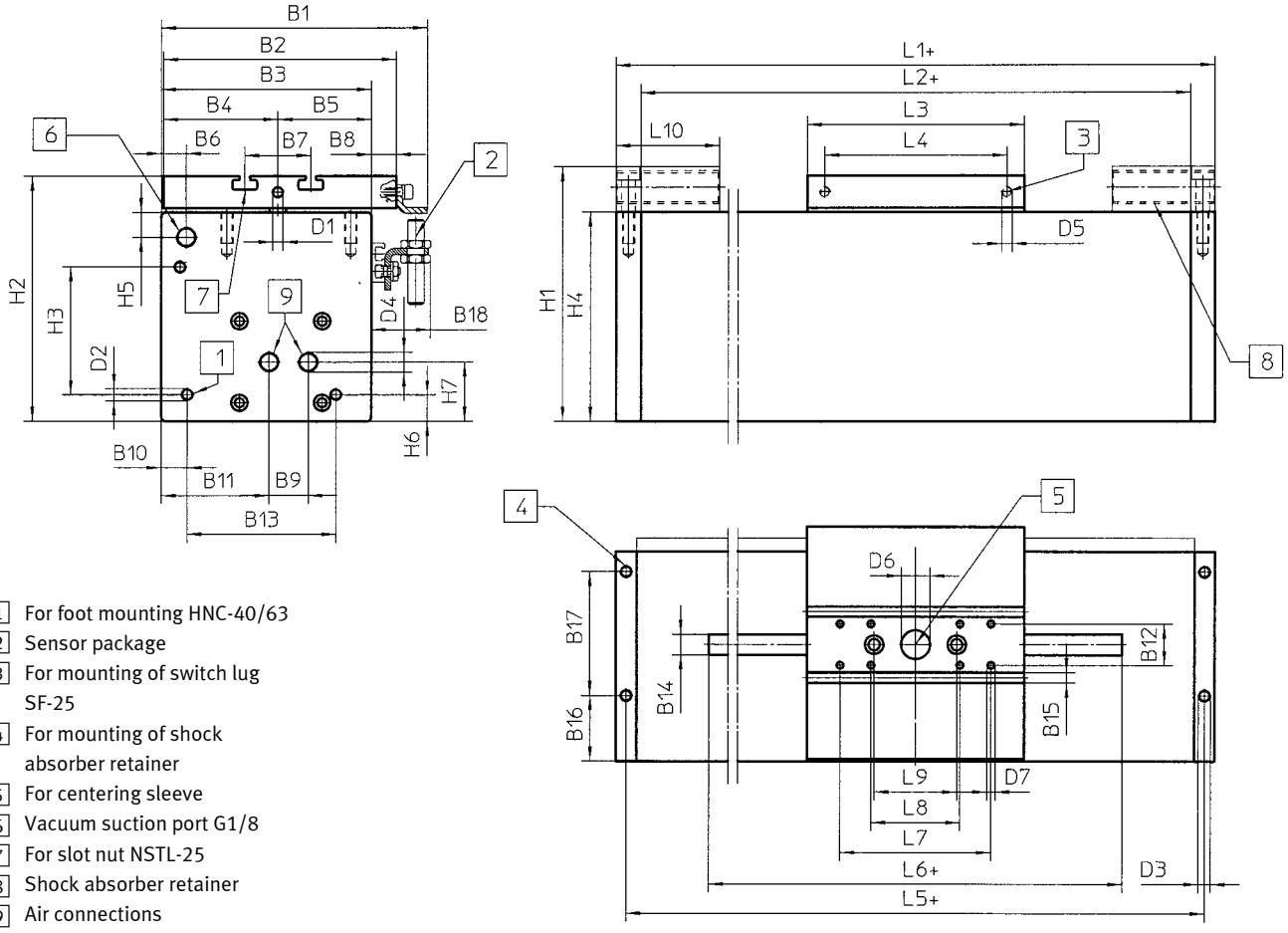
- 1 Seal
- 2 End cap
- 3 Cover strip
- 4 Profile barrel
- 5 Driver
- 6 Slide

Technical data		Type	DGPL		
		Size	25	32	40
Pneumatic data	Min. operating pressure	[bar]	2	2	1.5
	Max. operating pressure	[bar]	8	8	8
	Connections		G1/8	G1/8	G1/4
Mechanical data	Design		Pneumatic linear drive unit with slide		
	Guide		Recirculating ball bearing guide (KF)		
Size	Piston Ø	[mm]	25	32	40
Stroke length		[mm]	100 ... 1000		
Cushioning length		[mm]	18	20	30
Effective force at 6 bar (theoretical)		[N]	295	483	754
Max. speed	DGPL-...-KF	[m/s]	1		
Weights	Basic weight	DGPL-...-KF [kg]	1.52	2.72	4.48
	Per 10 mm stroke	DGPL-...-KF [g]	53	69	97
Materials	Drive unit	Profile barrel	Anodised aluminium		
		End cap	Anodised aluminium		
		Cover strip	Stainless steel		
		Driver	Anodised aluminium		
		Seals	-		
	Guide unit	Profile	-		
		End cap	-		
		Slide	Anodised aluminium		
		Guide rail	KF	Corrosion resistant steel	
	Tube	Profile	Aluminium, nickel plated		
End cover		Aluminium, nickel plated			
Ambient conditions	Temperature range	[°C]	-10 ...60		

# Pneumatic linear drives DGPL-...-KF-RR-SA

Ø 25, 32, 40 mm, stroke 100 to 1000 mm

Cleanroom class ISO 4 or 5 (FS209E class 10 or 100)



- 1 For foot mounting HNC-40/63
- 2 Sensor package
- 3 For mounting of switch lug SF-25
- 4 For mounting of shock absorber retainer
- 5 For centering sleeve
- 6 Vacuum suction port G1/8
- 7 For slot nut NSTL-25
- 8 Shock absorber retainer
- 9 Air connections

+ = plus stroke length

Ø [mm]	B1	B2	B3	B4	B5	B6	B7	B8	B9	B10	B11	B12	B13	B14
25	103.2	86	76.2	43	31	9.5	32	12	16.5	12.5	41.2	32	38	12
32	128.6	112	101.6	55	45	12	47	12	19	9.5	52.4	20	56.5	15
40	158	127	127	69.2	57.8	22	55	0	22	20	64.3	20	56.5	18

Ø [mm]	B15	B16	B17	B18	D1	D2	D3	D4	D5	D6	D7	H1	H2	H3
25	5	18.2	49.5	29	Ø 6	M6	M6	G1/8	M4	Ø 14 G7	M4	98.2	95.2	38
32	5	20.8	60	29	Ø 6	M8	M6	G1/8	M4	Ø 25 G7	M6	123.6	120.6	56.5
40	5	28.5	70	29	Ø 6	M8	M8	G1/4	M4	Ø 25 G7	M6	155	146	56.5

Ø [mm]	H4	H5	H6	H7	L1	L2	L3	L4	L5	L6	L7	L8	L9	L10
25	76.2	9.5	9	25.3	244	220	105	88	232	140	73	43	40	50
32	101.6	12	10	30	294	270	131	88	282	190	120	40	60	60
40	127	20.5	20	38	352	320	167	88	336	220	120	40	60	60