

Twin piston mini rotary actuators DRQD-...-J20-A-ZS-RR

Ø 6, 8 12, angle 90° and 180°

Cleanroom class ISO 5 (FS209E class 100)

Double acting, twin piston rotary actuator with spigot rotating shaft

DRQD-...-J20-A-ZW-ZS-RR

Double acting, twin piston rotary actuator with rotating flange

DRQD-...-J20-A-FW-ZS-RR



Defined interfaces, high accuracy and extremely good torsional rigidity make this rotary actuator the perfect choice for Festo modular system for handling of small part.

- 90° rotation angle
- 180° rotation angle
- Contact-less end-position sensing
- Twin-piston principle: Backlash-free, dynamic and powerful
- Compressed air supply at one end cap
- Flexible precision end position adjustment
- ZW: Spigot shaft
- FW: Flanged shaft
- Variable mounting options, direct via centering sleeves

ZW



FW

Order example:

Order no: 15083937
 Type: DRQD-8-180-J20-A-FW-ZS-RR
 Rotary actuator at 180 ° operation with rotating flange

Selection criteria:

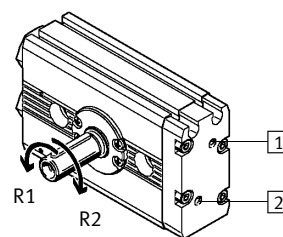
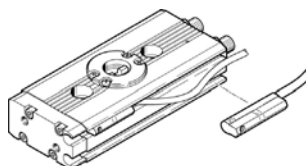
Refer to DKI (Electronic catalogue) or Volume 1 of Pneumatic Drives catalogue.

Accessories

Proximity sensor for fitting in slot (Page 40)
 SME-10...

Direction of rotation of the drive shaft

Pressure applied at connections 1 or 2 causes a rotary movement in R1 or R2 direction respectively.

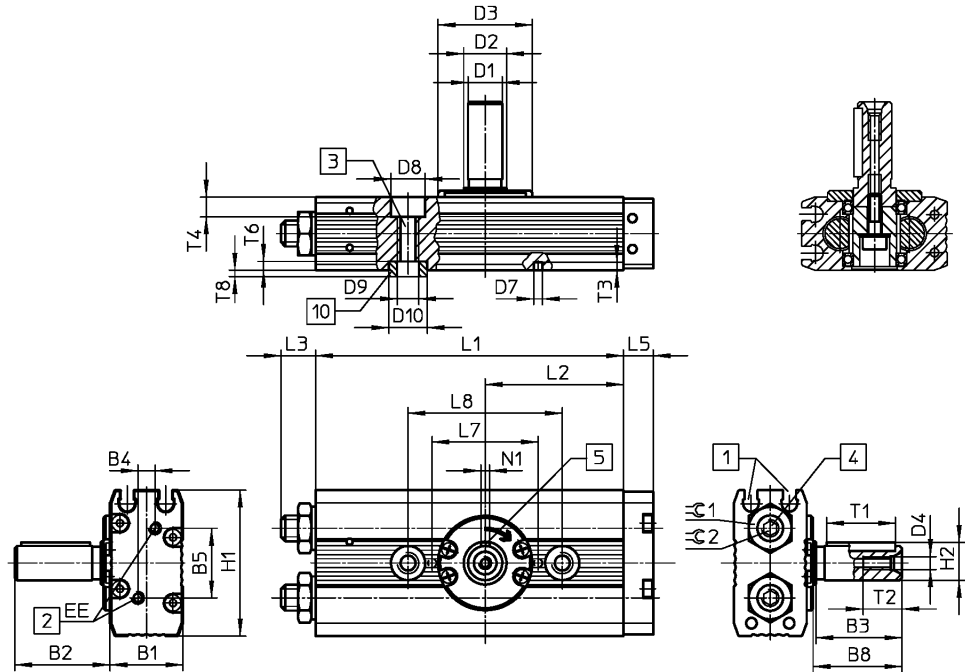
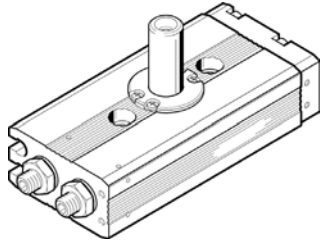


Type	Part No.	Torque at 6 bar [Nm]	Max. permissible mass moment of inertia [kgm ²]	Max. permissible freq		Repetition accuracy	Description
				[Hz] at 90°	[Hz] at 180°		
DRQD-6-...-J20-A-ZW-ZS-RR	15083936	0.16	0.075 x 10 ⁻⁴	5	3.5	Less than 0.2 °	J20: End position adjustment +6°/-20° A: Magnetic sensing ZW: Spigot shaft FW: Flange shaft ZS: Socket screw
DRQD-8-...-J20-A-ZW-ZS-RR	15083937	0.33	0.250 x 10 ⁻⁴	4	2.5		
DRQD-12-...-J20-A-ZW-ZS-RR	15083938	0.76	0.700 x 10 ⁻⁴	3	2		
DRQD-6-...-J20-A-FW-ZS-RR	15083936	0.16	0.075 x 10 ⁻⁴	5	3.5		
DRQD-8-...-J20-A-FW-ZS-RR	15083937	0.33	0.250 x 10 ⁻⁴	4	2.5		
DRQD-12-...-J20-A-FW-ZS-RR	15083938	0.76	0.700 x 10 ⁻⁴	3	2		

Twin piston mini rotary actuators DRQD-...-J20-ZW-A-ZS-RR

Ø 6, 8 12, angle 90° and 180°

Cleanroom class ISO 5 (FS209E class 100)



- 1 Sensor slots for type SME-10- proximity sensors
- 2 Supply ports
- 3 Mounting thread
- 4 Internal hex-head screw for end position adjustment
- 5 Woodruff key position at 0°
- 10 Centering sleeves (2 ea. included in scope of delivery)

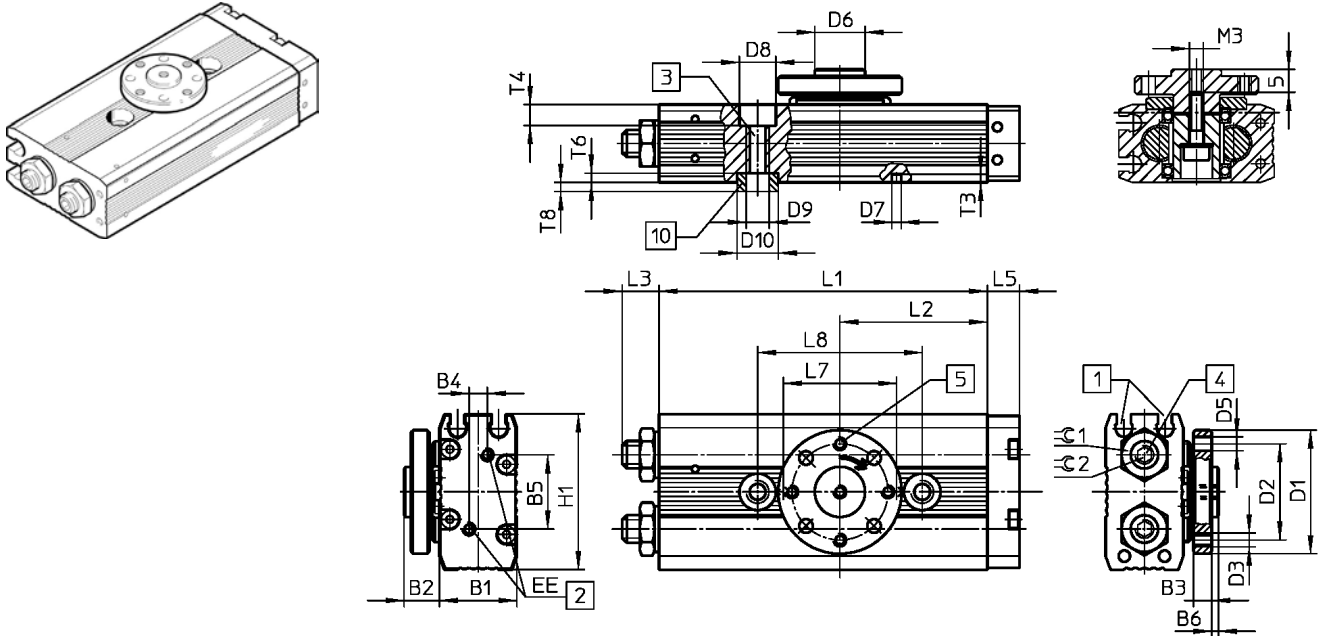
Ø	Swivel angle [°]	B1	B2	B3	B4	B5	B8	D1 Ø g7	D2 Ø g6	D3 Ø f7	D4	D7 Ø H8	D8 Ø H8	D9	D10 Ø H7	EE	H1	H2
6	90	15.4	18.2	16	2	13.6	16.7	6	8	20	M2.5	2	6	M4	7	M3	31	6.8
	180																	
8	90	17	22.2	20	4	16.2	20.7	8	10	22	M3	-	8	M5	9	M3	34	8.8
	180																	
12	90	21	22.2	20	6	18.2	20.7	8	10	22	M3	-	8	M5	9	M3	41	8.8
	180																	

Ø	Swivel angle [°]	L1	L2	L3 max.	L5	L7 ±0.03	L8 ±0.03	N1 P9	T1	T2	T3	T4	T6	T8	≙1	≙2
6	90	46.7	20.2	7.1	7.5	20	30	2	12	7	2	3.4	1.6	1.4	8	2.5
	180	61.8	27.8													
8	90	54.2	23.5	8.1	7	-	36	2	16	9	-	4.6	2	2	10	3
	180	71.8	32.3													
12	90	59.2	26	9.1	8	-	36	2	16	9	-	4.6	2	2	13	4
	180	76.8	34.8													

Twin piston mini rotary actuators DRQD-...-J20-FW-A-ZS-RR

Ø 6, 8 12, angle 90° and 180°

Cleanroom class ISO 5 (FS209E class 100)



- 1 Sensor slots for type SME-10- proximity sensors
- 2 Supply ports
- 3 Mounting thread
- 4 Internal hex-head screw for end position adjustment
- 5 Position of designated threaded hole at 0°
- 10 Centering sleeves (2 ea. included in scope of delivery)

Ø	Swivel Angle [°]	B1	B2	B3	B4	B5	B6	D1 Ø	D2 Ø	D3	D5 Ø H7	D6 Ø g7	D7 Ø H8	D8 Ø H8	D9	D10 H7
6	90	15.4	7.7	4	2	13.6	1.5	23	16	M3	3	8	2	6	M4	7
	180															
8	90	17	7.7	4	4	16.2	1.5	27	21	M3	3	11	-	8	M5	9
	180															
12	90	21	7.7	4	6	18.2	1.5	27	21	M3	3	11	-	8	M5	9
	180															

Ø	Swivel Angle [°]	EE	H1	L1	L2	L3 max.	L5	L7 ±0.03	L8 ±0.03	T3	T4	T6	T8	⊕ 1	⊕ 2
6	90	M3	31	46.7	20.2	7.1	7.5	20	30	1.8	3.4	1.6	1.4	8	2.5
	180			61.8	27.75										
8	90	M3	34	54.2	23.45	8.1	7	-	36	-	4.6	2	2	10	3
	180			71.8	32.25										
12	90	m3	41	59.2	25.95	9.1	8	-	36	-	4.6	2	2	13	4
	180			76.8	34.75										