

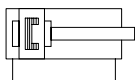
# Linear/swivel clamp CLR-...-P-A-RR-SA

Ø 12, 16, 20, 25 mm, stroke 10 to 20 mm

Cleanroom class ISO 5 (FS209E class 100)

The CLR linear/swivel clamp is used for all types of clamping.

## CLR-...-P-A-RR-SA



- Simple mechanical system
- Robust design
- Long service life
- Low initial, assembly and maintenance expenditure
- Subsequently adjustable swivel direction
- Compact dimensions for the tightest installation spaces
- Clamping finger sets including slip-on rubber cap to protect sensitive surfaces are available as accessories.
- Clamping finger can be freely adjusted across a full 360°
- Can be repaired with wearing parts kit

The combination of the linear and swivel motion of the piston rod, make it possible to insert and remove work pieces even beyond the clamping range. There is also a possibility to choose between swiveling to the right or left, while the CLR also boasts a linear stroke.

### Order example:

Order no: 15083579

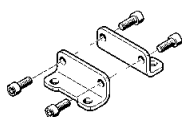
Type: CLR-16-20-R-P-A-RR-SA  
Swivel clamp, diameter 16 mm, 20 mm clamping stroke, swivel to the right to clamp.

### Selection criteria:

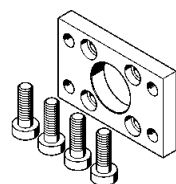
Refer to DK1 (Electronic catalogue) or Volume 1 of Pneumatic Drives catalogue.

### Mounting options

Foot mounting  
HNA-...

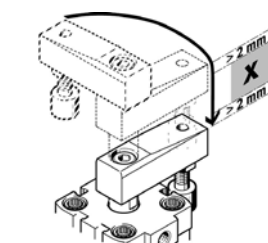
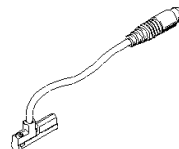


Flange mounting  
FNC-...



### Accessories

Proximity sensor for fitting in slot  
SME-10...

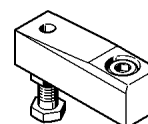


### Accessories

Clamping finger set CLR-...-FS-RR-SA

Materials:

Clamp arm: anodised aluminium  
Fixing screw, clamping screw and lock nut: stainless steel  
Protective cap: Polymer



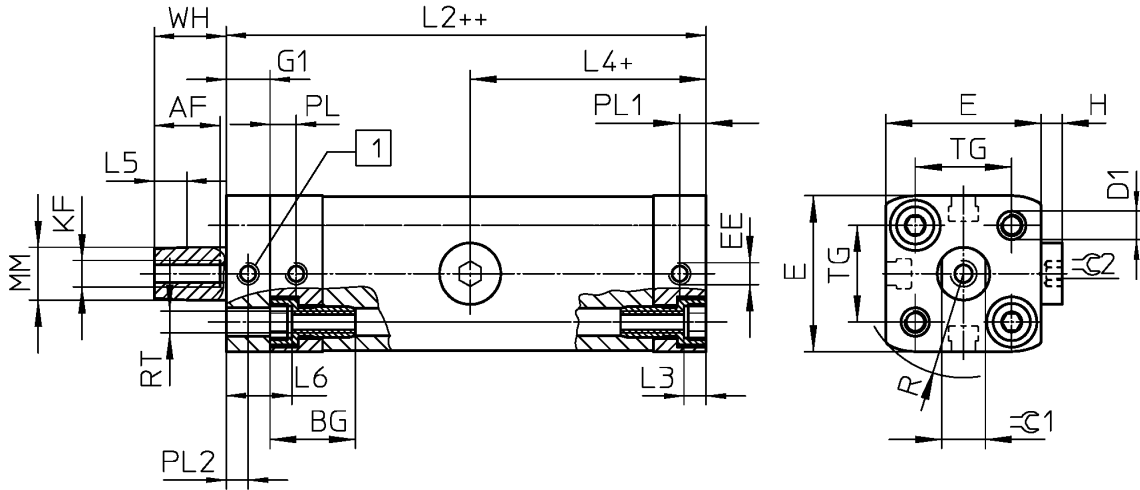
Type	Part no.
CLR-12-FS-RR-SA	15083592
CLR-16-FS-RR-SA	15083593
CLR-20/25-FS-RR-SA	15083594

Type	Part no.	Type	Part no.	Con- nection	Clamping force at 6 bar [N]	Female rod thread	Clamping stroke [mm]	Swivel stroke [mm]	Total stroke [mm]	Swivel angle [°]
Swivel to right		Swivel to left								
CLR-12-10-R-P-A-RR-SA	15083576	CLR-12-10-L-P-A-RR-SA	15083584	M5	51	M3	10	9	19	90
CLR-12-20-R-P-A-RR-SA	15082031	CLR-12-20-L-P-A-RR-SA	15083585				20	9	29	
CLR-16-10-R-P-A-RR-SA	15083578	CLR-16-10-L-P-A-RR-SA	15083586	M5	90	M4	10	10	20	90
CLR-16-20-R-P-A-RR-SA	15083579	CLR-16-20-L-P-A-RR-SA	15083587				20	10	30	
CLR-20-10-R-P-A-RR-SA	15083580	CLR-20-10-L-P-A-RR-SA	15083588	M5	121	M6	10	12	22	90
CLR-20-20-R-P-A-RR-SA	15083581	CLR-20-20-L-P-A-RR-SA	15083589				20	12	32	
CLR-25-10-R-P-A-RR-SA	15083582	CLR-25-10-L-P-A-RR-SA	15083590	M5	227	M6	10	12	22	90
CLR-25-20-R-P-A-RR-SA	15082032	CLR-25-20-L-P-A-RR-SA	15083591				20	12	32	

# Linear/swivel clamp CLR-...-P-A-RR-SA

Ø 12, 16, 20, 25 mm, stroke 10 to 20 mm

Cleanroom class ISO 5 (FS209E class 100)



1 Vacuum port

+ = plus clamping stroke length

++ = plus 2 x clamping stroke length

Ø [mm]	AF	BG	D1 Ø	E	EE	H	G1	KF	L2	L3	L4	L5
12	10	17	4.5	27.5	M5	3.25	10	M3	70.6	3.5	21.8	4.9
16	12	17	4.5	29	M5	3.25	10	M4	72.5	3.5	23.5	4.9
20	15	20	5.5	35.5	M5	4.75	10	M6	89.5	5	43.8	7.4
25	15	20	5.5	39.5	M5	4.75	10	M6	92.5	5	45.8	7.4

Ø [mm]	L6	MM Ø	PL	PL1	PL2	R	RT	TG	WH	⊕C1	⊕C2
12	13.5	6	6	15.1	5	18.2	M4	16	10.9	5	3
16	13.5	8	6.5	15	5	19.3	M4	18	10.9	7	3
20	15	12	6	6	5	23.7	M5	22	16.4	10	5
25	15	12	6	6	5	26.3	M5	26	16.4	10	5