

Compact performance individual valve CPA-SC-...-RR

2/2, 3/2, 5/2 and 5/3 way solenoid valve

Cleanroom class ISO 4 (FS209E class 10)

Compact performance valve terminal

CPA-SC-...-RR

The CPA-SC Smart Cubic is a compact valve terminal for a wide range of pneumatic applications. It permits a high degree of flexibility during planning, installation and system operation.

- Dimensions: All valves have the same length of 100 mm and width of 10 mm. Ultra flat variants with a height of 40 mm are also available.
- Valve functions: Wide choice, with 5/2- and 5/3-way functions and double functions with 2 x 3/2-way valves in one housing with flow rate of 150 l/min. Special functions are also available to expand the range of possible applications.
- Plug-in type electrical connection.
- Flexibility during installation and easy servicing, thanks to the fact that valve are screw mounted onto metallic manifolds.
- Long-lasting spool valves, with robust metallic housings and threaded connections

Order example:

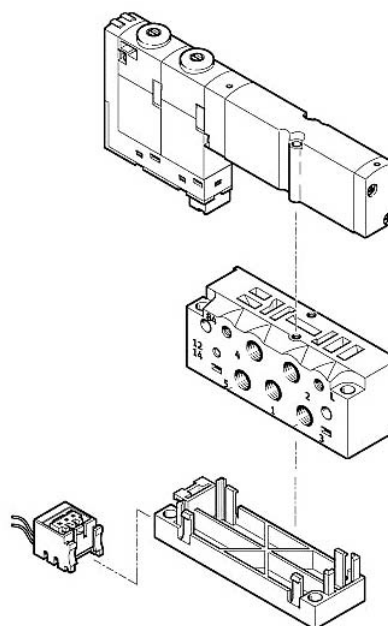
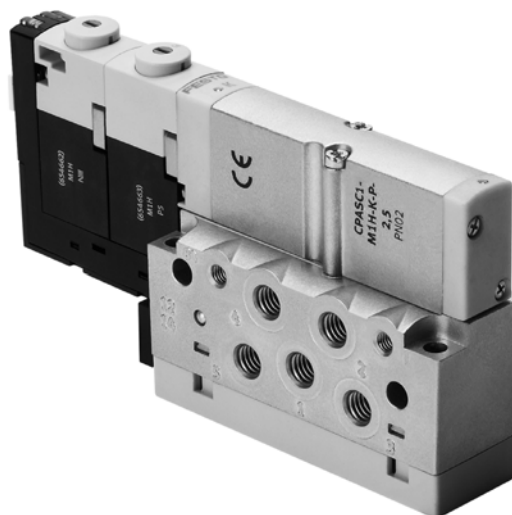
Part no: 15060300
Type: CPASC82P-10-1SH-AB-N-VLB-...-RR

CPVSC82P: Compact performance valve terminal
10: Valve width is 10 mm
1: Valve voltage 24 V DC
SP: Individual sub-base, plug-in, 0.5 m cable
AB: Working ports on sub-base with M5 thread connection
N: Manual override not concealed
V: Internal pilot air, ducted exhaust
LB: Pneumatic supply and exhaust ports on left side, with M5 thread connection
M: 5/2 way single solenoid valve (160 l/min)
RR: Suitable for cleanroom application

Important:

To simplify ordering, only the above type is included in the Cleanroom product range. Please contact Festo for other variations.

If supply pressure is less than 4 bar or greater than 8 bar, a separate air supply must be used for pilot air. To order valve terminal with external auxiliary pilot port, please contact Festo.



Type	Part No.	Description	Connections (on aluminum sub-base)	Operating pressure	Electrical data	Electrical connections	Protection class
CPASC82P-10-1SP-AB-N-VLB-...-RR	15060300	Individual valve for 1 position Fill in the blank space with the appropriate letters .	M5: 1, 3, 5 M5: 12, 14, 82, 84 M5: 2, 4	3...8 bar	Operating voltage: 24 V DC Power: 1.0 W per valve	Individual sub-base, plug-in, 0.5 m cable	IP 40

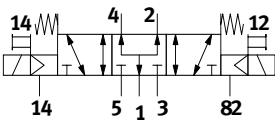
Compact performance individual valve CPA-SC...-RR

2/2, 3/2, 5/2 and 5/3 way solenoid valve

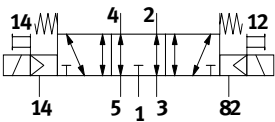
Cleanroom class ISO 4 (FS209E class 10)

The CPA-SC offers the following valve options. When ordering, fill in the blank space with the appropriate letters:

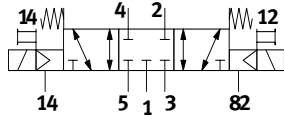
B: 5/3 way mid position pressurised valve (160 l/min)



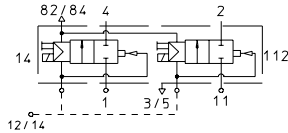
E: 5/3 way mid position exhausted valve (160 l/min)



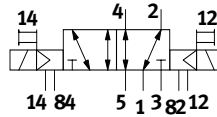
G: 5/3 way mid position closed valve (140 l/min)



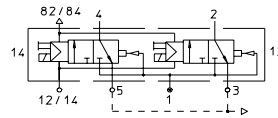
I: 2 x 2/2 way valve, normally close, for vacuum (140 l/min)



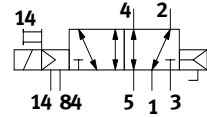
J: 5/2 way double solenoid valve (160 l/min)



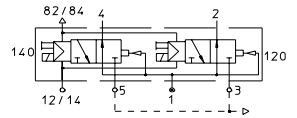
K: 2 x 3/2 way valve normally close (140 l/min)



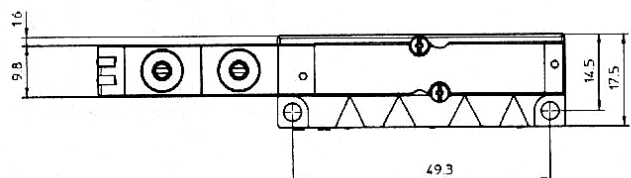
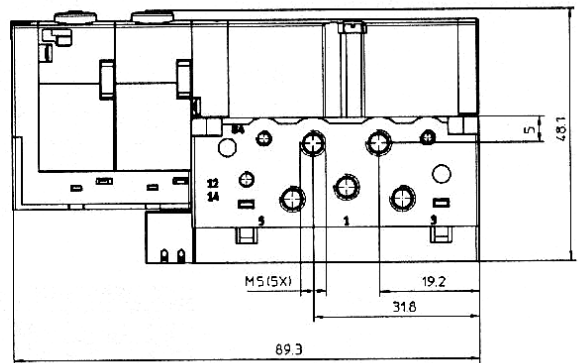
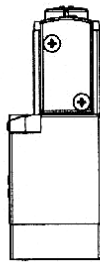
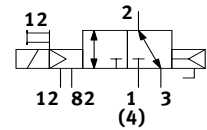
M: 5/2 way single solenoid valve (160 l/min)



N: 2 x 3/2 way valve normally open (140 l/min)



X: 1 x 3/2 way valve, external compressed air supply, normally closed (100 l/min)



Compact performance valve terminal CPA-SC-...-RR

2/2, 3/2, 5/2 and 5/3 way solenoid valve

Cleanroom class ISO 4 (FS209E class 10)

Compact performance valve terminal

CPA-SC-...-RR

The CPA-SC Smart Cubic is a compact valve terminal for a wide range of pneumatic applications. It permits a high degree of flexibility during planning, installation and system operation.

- Dimensions: All valves have the same length of 100 mm and width of 10 mm. Ultra flat variants with a height of 40 mm are also available.
- Valve functions: Wide choice, with 5/2 and 5/3 way functions and double functions with 2 x 3/2-way valves in one housing with flow rate of 150 l/min. Special functions are also available to expand the range of possible applications.
- Electrical connection using multi-pins sub-D plug connector.
- Flexibility during installation and easy servicing, thanks to the fact that valve are screw mounted onto metallic manifolds.
- Long-lasting spool valves, with robust metallic housings and threaded connections
- Plenty of scope for expansions with 4 to 20 valve positions possible, with max. 20 valve coils on one terminal.

Order example:

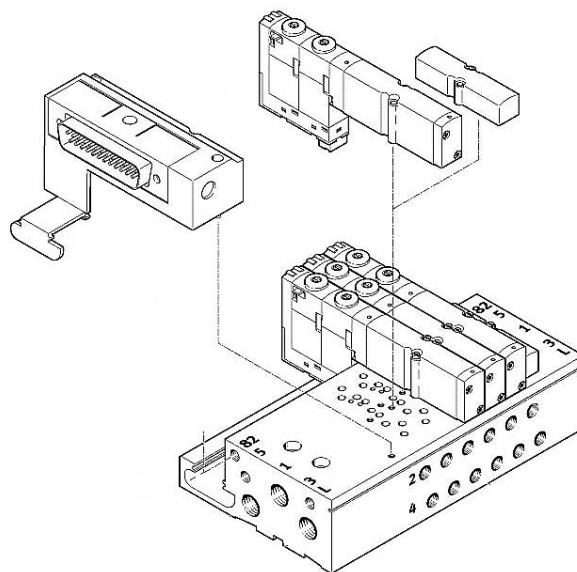
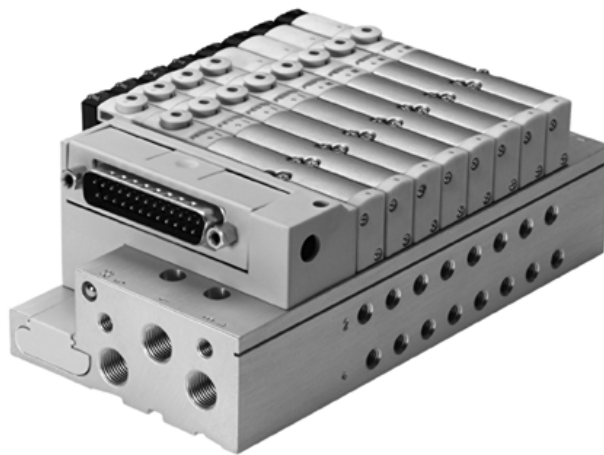
Part no: 15060299
 Type: CPASC82P-10-1MS-AB-N-VLD- MMMM-E +CP-RR

CPASC82P: Compact performance valve terminal
 10: Valve width is 10 mm
 1: Valve voltage 24 V DC
 MS: Multi-pin with sub-D, 25 pin connector
 AB: Working ports on sub-base with M5 thread connection
 N: Manual override not concealed
 V: Internal pilot air, ducted exhaust
 LD: Pneumatic supply and exhaust ports on left side, with G1/8 thread connection
 MMMM: 4 x 5/2 way single solenoid valve (160 l/min)
 E: English manual included
 CP: 2.5 m long connecting cable for sub-D multi-pin connector
 RR: Suitable for cleanroom application

Important:

To simplify ordering only one type is included in the Cleanroom product range. Please contact Festo for other variations.

If supply pressure is less than 4 bar or greater than 8 bar, a separate air supply must be used for pilot air. To order valve terminal with external auxiliary pilot port, please contact Festo.



Type	Part No.	Description	Connections	Operating pressure	Electrical data	Electrical connections	Protection class
CPASC82P-10-1MS-AB-N-VLD-... -E+CP-RR	15060299	Terminal from 4 to 20 valve positions, in step of 2 valve positions with max. 20 valve coils. Fill in the blank space with the appropriate letters .	G1/8: 1, 3, 5 (on left, end plate) M5: 12, 14, 82, 84 (on left, end plate) M5: 2, 4 (in aluminum sub-base)	3...8 bar	Operating voltage: 24 V DC Power: 1.0 W per solenoid coil	Sub-D connector with multi-core cable with 20 wires prefabricated at 2.5 m	IP 40

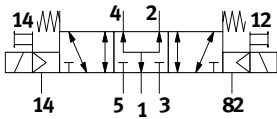
Compact performance valve terminal CPA-SC-...-RR

2/2, 3/2, 5/2 and 5/3 way solenoid valve

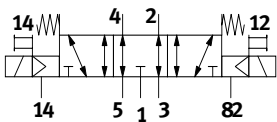
Cleanroom class ISO 4 (FS209E class 10)

The CPA-SC offers the following valve options. When ordering, fill in the blank space with the appropriate letters:

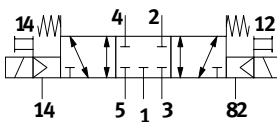
B: 5/3 way mid position pressurised valve (160 l/min)



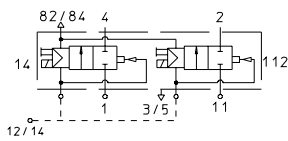
E: 5/3 way mid position exhausted valve (160 l/min)



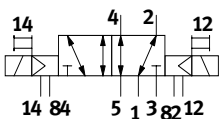
G: 5/3 way mid position closed valve (140 l/min)



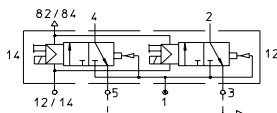
I: 2 x 2/2 way valve, normally close, for vacuum (140 l/min)



J: 5/2 way double solenoid valve (160 l/min)

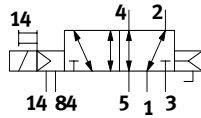


K: 2 x 3/2 way valve normally close (140 l/min)

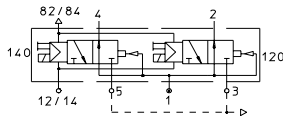


L: Blanking plate

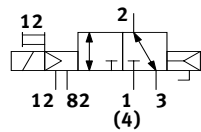
M: 5/2 way single solenoid valve (160 l/min)



N: 2 x 3/2 way valve normally open (140 l/min)



X: 1 x 3/2 way valve, external compressed air supply, normally closed (100 l/min)



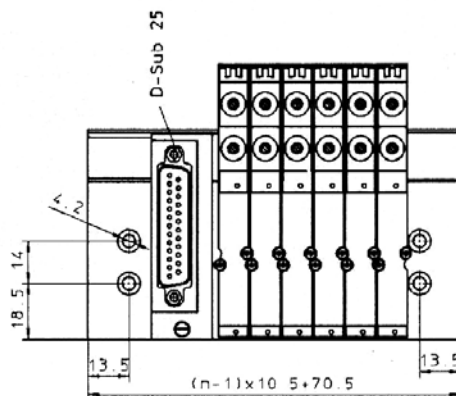
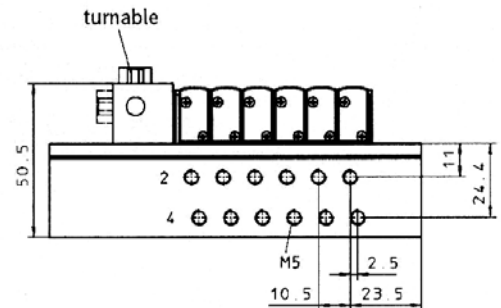
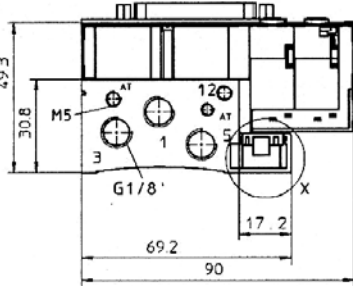
Special note when ordering:

Depending on the number of valves configured at any particular time, it is possible to address and trigger valves with one or two solenoid coils. If the number of valve positions is less than 10, it is always possible to address 2 valve coils. With 12 valve positions and more, the number of valve

positions available for valves with two coils is reduced as shown in the table

Example: With 16 valve positions, the first four positions can be equipped with valves with one or two solenoid coils. At positions 5 to 16, it is possible to fit single-solenoid valves only.

Valve position	1	2	3	4	5	6	7	8	9	10	11	12	13	14	15	16	17	18	19	20
coils																				
20	1	1	1	1	1	1	1	1	1	1	1	1	1	1	1	1	1	1	1	1
20	2	2	2	2	1	1	1	1	1	1	1	1	1	1	1	1				
20	2	2	2	2	2	2	2	1	1	1	1									
20	2	2	2	2	2	2	2	2	2											
16	2	2	2	2	2	2	2	2												
12	2	2	2	2	2	2														
8	2	2	2	2																



X 2:1

