

Compact Performance valve CPE-...-RR

3/2, 5/2 and 5/3 way solenoid valve

Cleanroom class ISO 5 (FS209E class 100)

Performance optimised sizes, the solenoid valves CPE, Compact Performance are distinguished by their minimal width and low power consumption at high flow rates.

- Internal air piloted
- Shorter tubing lengths with minimal air volumes:
- Fast switching times
- Quick reaction times
- Shorter machine cycles
- Low power consumption
- Convenient manual override
- A current reduction function has been integrated in the KMYZ-9 plug socket



Type	Part No.	
Plug socket PUN cable with LED (IP 65)		
KMYZ-9-24-2,5-LED-PUR-B-RR	2.5 m	15084763
KMYZ-9-24-5-LED-PUR-B-RR	5.0 m	15084764
KMYZ-9-24-10-LED-PUR-B-RR	10 m	15084765
Manual override tool		
AHB-MZB-RR	15084766	

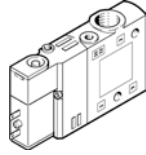
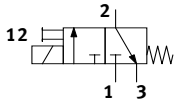
Type	Part No.	Width [mm]	Grid size [mm]	Nominal Size [mm]	Flowrate [l/min]	Connection		Respond time on/off	Operating Pressure [bar]	Weight [g]
						Main	Pilot			
3/2 way										
CPE10-M1BH-3GL-M7-RR	15084749	10	12	4	400	M7	M3	14/14 ms	2.5 ... 8	45
CPE10-M1BH-3OL-M7-RR	15084750	10	12	4	400	M7	M3	14/14 ms	2.5 ... 8	45
CPE14-M1BH-3GL-1/8-RR	15084751	14	16	6	900	G1/8	M3	27/16 ms	2.5 ... 8	60
CPE14-M1BH-3OL-1/8-RR	15084752	14	16	6	900	G1/8	M3	27/16 ms	2.5 ... 8	60
5/2 way										
CPE10-M1BH-5L-M7-RR	15084753	10	12	4	350	M7	M3	16/16 ms	3 ... 8	56
CPE14-M1BH-5L-1/8-RR	15084754	14	16	6	800	G1/8	M3	24/32 ms	3 ... 8	95
5/2 way double solenoid										
CPE10-M1BH-5J-M7-RR	15084755	10	12	4	350	M7	M3	8 ms	2.5 ... 8	68
CPE14-M1BH-5J-1/8-RR	15084756	14	16	6	800	G1/8	M3	12 ms	2 ... 8	115
5/3 way. Normally closed										
CPE10-M1BH-5/3G-M7-B-RR	15084757	10	12	4	350	M7	M3	16/20 ms	3 ... 8	73
CPE14-M1BH-5/3G-1/8-RR	15084758	14	16	6	750	G1/8	M3	20/42 ms	3 ... 8	120
5/3 way. Normally exhausted										
CPE10-M1BH-5/3E-M7-B-RR	15084759	10	12	4	250	M7	M3	16/20 ms	3 ... 8	73
CPE14-M1BH-5/3E-1/8-RR	15084760	14	16	6	700	G1/8	M3	20/42 ms	3 ... 8	120
5/3 way. Normally pressurised										
CPE10-M1BH-5/3B-M7-B-RR	15084761	10	12	4	300	M7	M3	16/20 ms	3 ... 8	73
CPE14-M1BH-5/3B-1/8-RR	15084762	14	16	6	750	G1/8	M3	20/42 ms	3 ... 8	120

Compact Performance valve CPE-...-RR

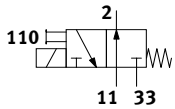
3/2, 5/2 and 5/3 way solenoid valve

Cleanroom class ISO 5 (FS209E class 100)

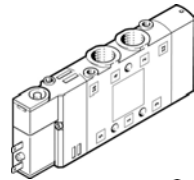
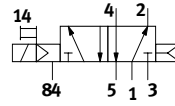
3GL: 3/2 way, normally close



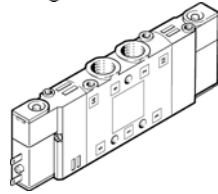
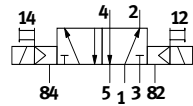
30L: 3/2 way, normally open



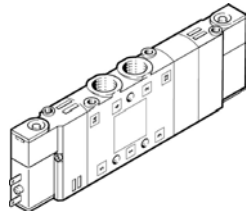
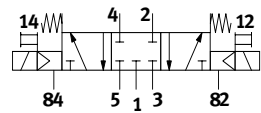
5L: 5/2 way, single solenoid



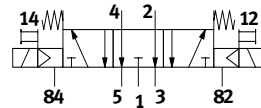
5J: 5/2 way, double solenoid



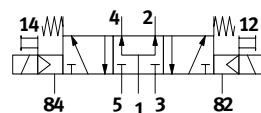
5/3G: 5/3 way, normally closed



5/3E: 5/3 way, normally exhausted



5/3B: 5/3 way, normally pressurised



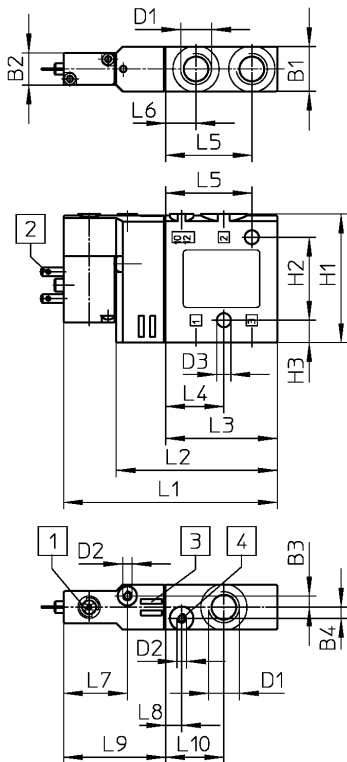
Technical data

Valve function	3/2, 5/2, 5/3 way
Design	Piston spool
Sealing principle	Soft
Actuation type	Electrical
Type of reset	5/2: Pneumatic, 5/3: Mechanical spring
Type of control	Piloted
Pilot air supply	Internal or external
Direction of flow	Internal pilot air supply: non-reversible
Exhaust function	With flow control
Manual override	Resetting, detenting via tool accessory
Mounting position	Any
Ambient temperature	-5 ... +50
Temperature of medium	-5 ... +50
Operating voltage	24 V DC +10/-15%
Power consumption	1.28 W
Degree of protection	IP 65 (EN 60 529)

Compact Performance valve CPE-...-RR

3/2, 5/2 and 5/3 way solenoid valve

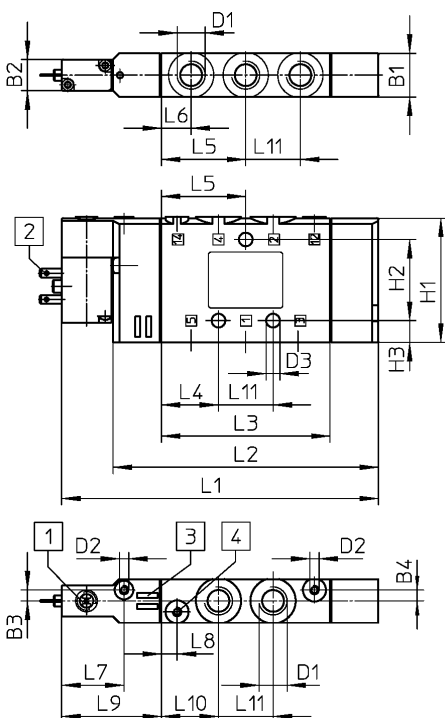
Cleanroom class ISO 5 (FS209E class 100)



- 1 Manual override facility
- 2 Connection for plug socket
- 3 Location for inscription labels
- 4 Pilot air connection

3/2 way NO or NC	B1	B2	B3	B4	D1	D2	D3	H1	H2	H3
M7	10	10	2.3	1.5	M7	M3	3.5	35	26	4
G1/8	14	10	3.5	3.5	G1/8	M3	4.4	40.3	26	7

	L1	L2	L3	L4	L5	L6	L7	L8	L9	L10
M7	57	40.8	28.5	16.5	23	10	16.3	4.2	28.5	16.5
G1/8	67	50.5	35	18.3	27	9.5	20	5	32	18.3



- 1 Manual override facility
- 2 Connection for plug socket
- 3 Location for inscription labels
- 4 Pilot air connection

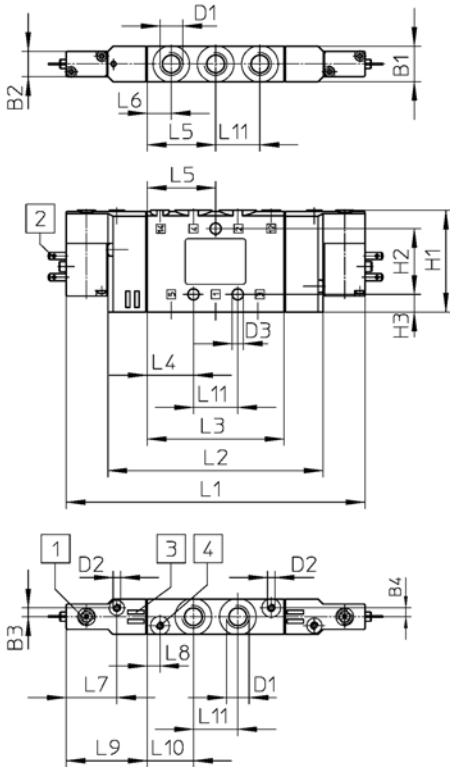
5/2 way , single solenoid	B1	B2	B3	B4	D1	D2	D3	H1	H2	H3
M7	10	10	2.3	1.5	M7	M3	3.5	35	26	4
G1/8	14	10	3.5	3.5	G1/8	M3	4.4	40.3	26	7

	L1	L2	L3	L4	L5	L6	L7	L8	L9	L10	L11
M7	86.8	70.6	46	16.5	23	10	16.3	4.2	28.5	16.5	13
G1/8	101.5	85	54	18.3	27	9.5	20	5	32	18.3	17.5

Compact Performance valve CPE-...-RR

3/2, 5/2 and 5/3 way solenoid valve

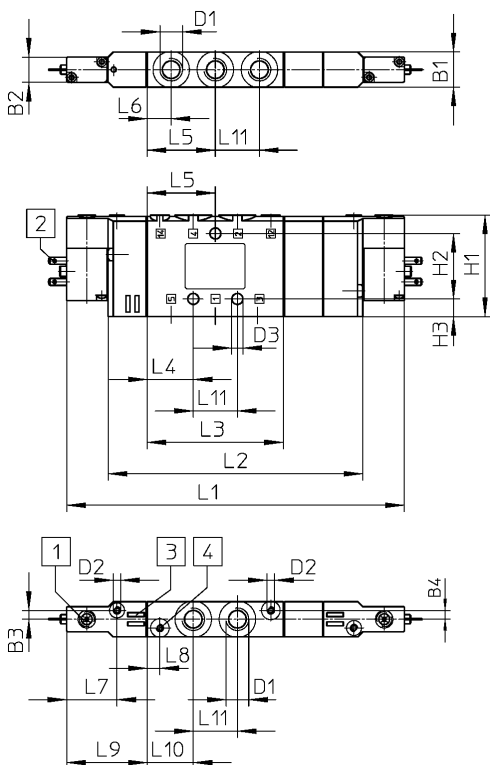
Cleanroom class ISO 5 (FS209E class 100)



- 1 Manual override facility
- 2 Connection for plug socket
- 3 Location for inscription labels
- 4 Pilot air connection

5/2 way , Double solenoid	B1	B2	B3	B4	D1	D2	D3	H1	H2	H3
M7	10	10	2.3	1.5	M7	M3	3.5	35	26	4
G1/8	14	10	3.5	3.5	G1/8	M3	4.4	40.3	26	7

	L1	L2	L3	L4	L5	L6	L7	L8	L9	L10	L11
M7	103	70.6	46	16.5	23	10	16.3	4.2	28.5	16.5	13
G1/8	118	85	54	18.3	27	9.5	20	5	32	18.3	17.5



- 1 Manual override facility
- 2 Connection for plug socket
- 3 Location for inscription labels
- 4 Pilot air connection

5/3 way , Double solenoid	B1	B2	B3	B4	D1	D2	D3	H1	H2	H3
M7	10	10	2.3	1.5	M7	M3	3.5	35	26	4
G1/8	14	10	3.5	3.5	G1/8	M3	4.4	40.3	26	7

	L1	L2	L3	L4	L5	L6	L7	L8	L9	L10	L11
M7	115.6	83.2	46	16.5	23	10	16.3	4.2	28.5	16.5	13
G1/8	134	101	54	18.3	27	9.5	20	5	32	18.3	17.5