

Quick connector series CK-...-RR

Cleanroom class ISO 4 (FS209E class 10)

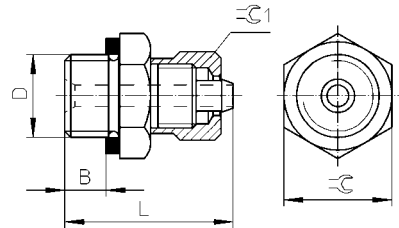
Quick connector range

Threaded connection: M5 to G1/2
 Tubing I.D.: 3 to 13 mm

- Wide variety of variants, e.g. rotatable
- Aluminum or polymer design
- With sealing ring or moulded-on sealing rim



Quick connector with male thread CK-...-RR

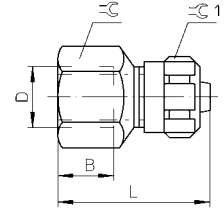


Type	Part No.	Connection D	For tubing Type	Nominal size (mm)	Material	Dimensions			
						B	L	≡C	≡C1
CK-M5-PK-3-RR	15024505	M5	PUN-4-...	2.4	Steel/Al with sealing ring	3.7	17.4	7	8
CK-M5-PK-4-RR	15024506	M5	PUN-6-...	2.4		3.7	18.7	10	-
CK-1/8-PK-3-RR	15024507	G1/8	PUN-4-...	2.4	Al, blue anodised with sealing ring	5	20.4	13	8
CK-1/8-PK-4-RR	15024508	G1/8	PUN-6-...	3.4		5	23.5	13	12
CK-1/8-PK6-RR	15024509	G1/8	PUN-8-...	5.4		5	23.6	13	14
CK-1/4-PK-4-RR	15024510	G1/4	PUN-6-...	3.4		6.5	26.5	17	12
CK-1/4-PK-6-RR	15024511	G1/4	PUN-8-...	5.4		6.5	26.6	17	14
CK-3/8-PK-6-RR	15024513	G3/8	PUN-8-...	5.3		8.5	28.6	19	14

Quick connector series CK-...-RR

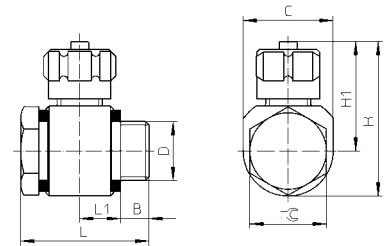
Cleanroom class ISO 4 (FS209E class 10)

Quick connector with female thread and sealing ring
ACK-...-RR



Type	Part No.	Connection D	For tubing Type	Nominal size (mm)]	Material	Dimensions			
						B	L	\varnothing	$\varnothing 1$
ACK-1/8-PK-3-RR	15024528	G1/8	PUN-4-...	2.4	Al, blue anodised	9	23.9	13	8
ACK-1/8-PK-4-RR	15024529	G1/8	PUN-6-...	3.4		9	27	13	12
ACK-1/8-PK-6-RR	15024531	G1/8	PUN-8-...	5.3		9	27	13	14
ACK-1/4-PK-4-RR	15024532	G1/4	PUN-6-...	3.4		12	30	17	12
ACK-1/4-PK-6-RR	15024533	G1/4	PUN-8-...	5.3		12	30	17	14
ACK-3/8-PK-6-RR	15024534	G3/8	PUN-8-...	5.3		12	31	19	14

L-quick connector. Rotatable
LCK-...-RR



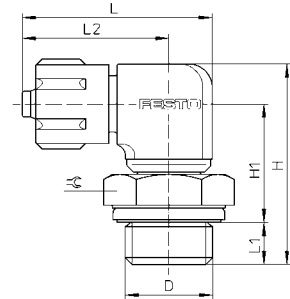
Type	Part No.	Connection D	For tubing Type	Nominal size [mm]	Material	Dimensions						
						B	C	H	H1	L	L1	\varnothing
LCK-M5-PK-3-RR	15024545	M5	PUN-4-...	2	Die-cast zinc with 2 sealing rings	4.2	10	21.1	16.1	18.2	5.7	7
LCK-M5-PK-4-RR	15024546	M5	PUN-6-...	2.9		3.4	11	21.1	16.1	18.2	5.7	7
LCK-1/8-PK-3-RR	15024547	G1/8	PUN-4-...	2		6.4	16	27.1	19.1	22	6	13
LCK-1/8-PK-4-RR	15024548	G1/8	PUN-6-...	2.9		6	16	30.2	22.2	27.5	9	13
LCK-1/8-PK-6-RR	15024549	G1/8	PUN-8-...	4.9		6	16	30.3	22.3	27.5	9	13
LCK-1/4-PK-4-RR	15024550	G1/4	PUN-6-...	2.9		7	20	34.2	24.2	28.5	9	17
LCK-1/4-PK-6-RR	15024551	G1/4	PUN-6-...	4.9		6.8	20	34.3	24.3	28.5	9.1	17
LCK-3/8-PK-6-RR	15024553	G3/8	PUN-8-...	4.9		8.6	25	39.3	26.8	31	9.1	22

Quick connector series CK-...-RR

Cleanroom class ISO 4 (FS209E class 10)

L-quick connector. Rotatable with sealing rings OL...

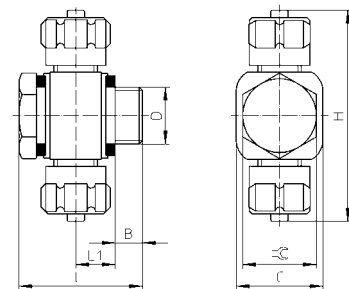
LCKN-...-RR



Type	Part No.	Conec-tion D	For tubing Type	Nominal size [mm]	Material	Dimensions					
						H	H1	L	L1	L2	⌀
LCKN-M5-PK-3-RR	15024560	M5	PUN-4-...	1.7	Die-cast zinc/ aluminium with sealing ring	22.2	15.2	20.1	3.1	16.1	7
LCKN-M5-PK-4-RR	15024561	M5	PUN-6-...	2.6		23.8	15.8	23.2	3.1	19.2	7
LCKN-1/8-PK-3-RR	15024562	G 1/8	PUN-4-...	1.7		24.6	15.9	25.4	4.7	18.9	13
LCKN-1/8-PK-4-RR	15024565	G1/8	PUN-6-...	2.6		27	16.3	28.5	4.7	22	13
LCKN-1/8-PK-6-RR	15024567	G1/8	PUN-4-...	4.6		30.3	18.6	28.6	4.7	22.1	13
LCKN-1/4-PK-4-RR	15024568	G1/4	PUN-6-...	2.6		30	17.7	28.5	6.3	22	17
LCKN-1/4-PK-6-RR	15024569	G1/4	PUN-8-...	4.6		33.3	20	28.6	6.3	22.1	17
LCKN-3/8-PK-6-RR	15024570	G3/8	PUN-8-...	4.6		35.3	20.8	28.6	7.5	22.1	19

T quick connector. Rotatable

TCK-...-RR

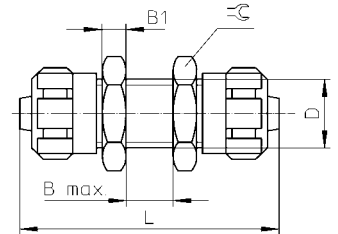


Type	Part No.	Connec-tion D	For tubing Type	Nominal size [mm]	Material	Dimensions					
						B	C	H	L	L1	⌀
TCK-M5-PK-3-RR	15024517	M5	PUN-4-...	2.4	Die-cast zinc with 2 sealing rings	4.2	10	21.1	18.2	5.7	7
TCK-M5-PK-4-RR	15024520	M5	PUN-6-...	3.4		3.4	11	21.1	18.2	5.7	7
TCK-1/8-PK-3-RR	15024521	G1/8	PUN-4-...	2.4		6.4	16	38.2	22	6	13
TCK-1/8-PK-3-RR	15024522	G1/8	PUN-4-...	3.4		6	16	44.4	27.5	9	13
TCK-1/8-PK-6-RR	15024523	G1/8	PUN-8-...	5.3		6	16	44.6	27.5	9	13
TCK-1/4-PK-4-RR	15024524	G1/4	PUN-6-...	3.4		7	20	48.4	28.5	9	17
TCK-1/4-PK-6-RR	15024525	G1/4	PUN-8-...	5.3		6	20	48.6	28.5	9.1	17
TCK-3/8-PK-6-RR	15024526	G3/8	PUN-8-...	5.3	Al, blue anodised	9	25	53.6	31.5	9	22

Quick connector series CK-...-RR

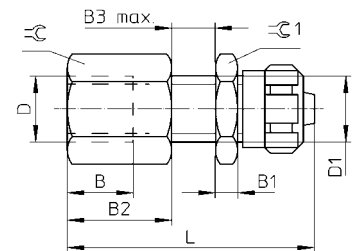
Cleanroom class ISO 4 (FS209E class 10)

Bulkhead quick connector
SCK-...-RR



Type	Part No.	For tubing Type	Nominal size [mm]	Material	Dimensions				
					B max.	B1	D	L	≅
SCK-PK-3-RR	15024541	PUN-4-...	2.4	Al, blue anodised/steel	8	3.2	M6x0.75	34	10
SCK-PK-4-RR	15024542	PUN-6-...	3.4		10	3.5	M10x1	43	13
SCK-PK-6-RR	15024543	PUN-8-...	5.3		10	4	M12x1	44	17

Bulkhead quick connector with female thread and sealing ring
QCK-...-RR



Type	Part No.	Con- nection D	For tubing I.D.	Nominal size [mm]	Mate- rial	Dimensions							
						B	B1	B2	B3 max.	D1	L1	≅	≅1
QCK-M5-PK-3-B-RR	15024556	M5	PUN-4-...	2.4	Al, blue anodised/steel	6	3.2	10	8	M6x0.75	31	7	10
QCK-1/8-PK-4-B-RR	15024557	G1/8	PUN-6-...	3.4		8	3.5	13.5	10	M10x1	40	13	13
QCK-1/4-PK-6-B-RR	15024558	G1/4	PUN-8-...	5.3		12	4	18	10	M12x1	45	17	17