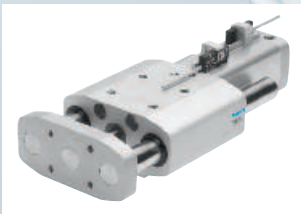


trends in automation

New products for the food and beverage sector

FESTO



A small selection of components from a complete program of products and services to meet the needs of the food and beverage sector

Pneumatic drives

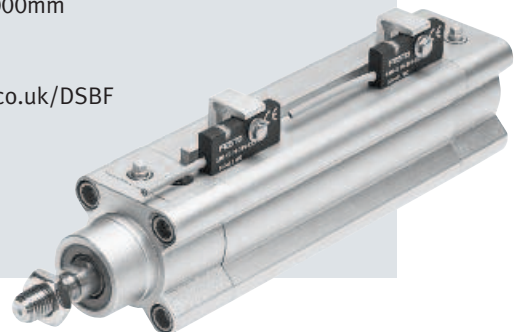
Clean design standard cylinder DSBF

The new Festo family of ISO 15552 cylinders for lower prices, improved performance and, through optimised use of shared parts, even better manufacturing flexibility and delivery performance.

The DSBF utilises USDA-H1 lubricating grease and FDA-compliant wiper seals ensuring no problems with food contact. The sensor mountings for the DSBF are also hygienically designed with a raised profile bead for easier washing and draining. Self-adjusting cushioning option (PPS) eliminates setting screws in the end caps and optimises deceleration even under varying speed and mass load conditions. Wiper seal options include dry-running variants for unlubricated operation (for when aggressive cleaning fluids flush away assembly grease).

Double acting cylinders to ISO 15552
Piston dia: 32, 40, 50, 63, 80 and 100mm
Stroke: 10...2000mm

www.festo.co.uk/DSBF



Cost effective cylinder: optimised for splash zone applications.

Pneumatic drives

Compact cylinder CDC

Standard dimensions (ISO 21287) but above average performance. Smooth lines and virtually no crevices or dirt traps enable easy wash down for food splash zone areas. Unused mounting holes are blanked off with dome headed stainless steel screws. Enhanced corrosion resistance (to CRC3) enables the CDC compact cylinder to withstand aggressive cleaning fluids.

Inside, the patented 3K piston is designed to tolerate greater loads and cushion end of stroke impacts at higher speeds. Sensing options include: integrated, for ultimate clean lines (dia. 32mm and greater) or external, for increased flexibility and convenience (type SMx-C1).

Double acting compact cylinders to ISO 21287
Piston dia: 20, 25, 32, 40, 50, 63 and 80mm
Stroke: 1...500mm



Compact cylinder: with smooth convex surfaces for easier wash down.

www.festo.co.uk/CDC

Pneumatic drives

Stainless steel roundline cylinders CRDSNU – clean design

The clean line, stainless steel round line cylinders CRDSNU are now available with PPS self adjusting cushioning for dynamic and gentle approach into end positions. This cushioning eliminates the potential cleaning traps of the adjustment screws in the end caps and optimises cushioning behaviour even for varying loads.

The CRDSNU conforms to ISO 6432 dimensional standards (diameters 12, 16, 20 and 25mm) for a wide, economic range of mountings and accessories. The split bearing end cap design enables quick replacement of the nose wiper and seals. Seal options include dry-running variants for frequent wash down environments.

Double acting cylinders to ISO 6432 (12-25mm)
Piston dia: 12, 16, 20, 25, 32, 40, 50 and 63mm
Stroke: 1...500mm

Cushioning types Flexible cushioning (P)
Adjustable cushioning (PPV)
Self-adjusting cushioning (PPS)

Scraper versions Heat-resistant (A1)
Rigid scraper (A2)
Dry-running seal (A3)
Through piston rod (S2)
Heat-resistant seals +120°C (S6)

Options Low temperature -40°C (TT)
Piston rod with extended male thread (K2)
Female piston rod thread (K3)
Special thread on piston rod (K5)
Extended piston rod (K8)

www.festo.co.uk/CRDSNU



Stainless steel: ISO 6432 roundline CRDSNU.

PPS: self adjusting cushioning.



Fittings

Corrosion resistant polypropylene fittings NPQP

With a range of more than 100 types the transparent NPQP polymer fittings are ideal for corrosive environments. With polypropylene bodies, stainless steel release rings and EPDM sealing rings, the NPQP fittings are a cost effective alternative to stainless steel in splash zones and in areas out of food contact but still exposed to cleaning chemicals.

Thread sizes: M5, R1/8, R1/4, R3/8, R1/2
 Tube dia: 4, 6, 8, 10 and 12mm

www.festo.co.uk/NPQP



A clear case: for cost effective, corrosion resistant fittings.

Fittings

Metal fittings – FDA approved materials QS-F



Push-in ease: rugged reliability.

Solid-metal push-in fitting with chrome plated surface coating. High corrosion resistance (CRC3) and chemical resistance with approval for use in the food and packaging industry. For pneumatic applications with a temperature range up to 150°C and a pressure range up to 16 bar.

Tubing O.D.: 4, 6, 8, 10 and 12mm
 Threads: M5, M7 and G1/8...G1/2
 Pressure range: -0.95...+16 bar
 Temperature range: 0...+150°C

www.festo.co.uk/QSF

Tubing

Hydrolysis resistant polyurethane tubing PUN-H



Flexible: and yet resistant.

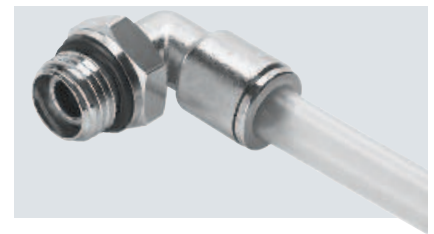
PUN-H is a winner in wash down zones. In wet and humid conditions, many polymer tubings are prone to hydrolysis: the breakdown in the surface of the tube creates cracks and crazing. Particularly under elevated temperatures other tubing becomes brittle, creating leaks or opening up the porous surface to bacterial attack.

Tubing O.D.: 3, 4, 6, 8, 10, 12 and 16mm

www.festo.co.uk/PUNH

Tubing

High resistance tubing PFAN



Ultimate: high performance tubing.

This special Perfluoralkoxy alkane PFAN tube is very temperature resistant, and highly resistant to acids and alkalis. It is suitable for contact with food in line with FDA CFR21 and conforms to RoHS.

Temperature range: -20...150°C
 Tubing diameters: 4, 6, 8, 10 and 12mm

www.festo.co.uk/PFAN



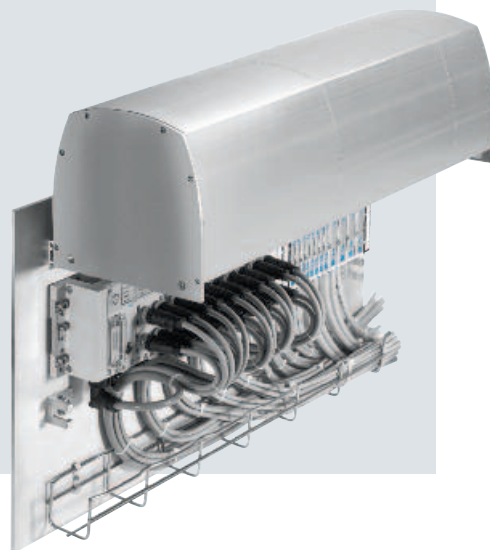
Valves

Keep it under cover!

Even away from the food and splash zones there can still be a need to protect pneumatic and control equipment. The CAFC hood fits neatly over the versatile CPX valve terminal system. Where it replaces a cabinet completely it can cut the cost of installing valve terminals by up to 70% .

The aluminium hood saves space and protects the terminal against dust and water droplets, as well as guarding against impact damage and helping to prevent tampering. It can also be used to comply with ATEX requirements that protective cabinets must be used for switchgear and controllers in Zone 2 and 22 environments.

The hood allows valve terminals to be located close to a process or machine, cutting tubing and cable lengths, reducing actuator response times, and cutting compressed air consumption. When the hinged cover is open, it allows access to the valve terminal's electrical and pneumatic connections.



For more information on the complete range of products and services for the food and beverage industry

www.festo.co.uk/food



Great Britain:

Festo Ltd

Applied Automation Centre
Caswell Road
Brackmills Trading Estate
Northampton
NN4 7PY
Phone 0800 626422
Fax 01604 667001

E-mail: info_gb@festo.com
Internet: www.festo.com/gb

Ireland:

Festo Ltd

Unit 5
Sandyford Park
Sandyford Industrial Estate
Dublin 18
Phone +353 (0) 1 2954955
Fax +353 (0) 1 2955680

E-mail: sales_ie@festo.com
Internet: www.festo.com/ie