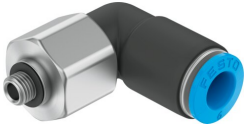


# Push-in L-fitting, rotatable QSRL-M5-4

Part number: 153529

FESTO



 General operating condition

## Data sheet

Feature	Value
Size	Standard
Nominal size	1.4 mm
Tubing insertion depth	14.9 mm
Type of seal on screwed plug	Sealing ring
Mounting position	optional
Design	L-shape
Size of pack	1
Design	Push-pull principle
Operating pressure complete temperature range	-0.095 MPa ... 0.6 MPa
Operating pressure complete temperature range	-0.95 bar ... 6 bar
Operating pressure complete temperature range	-13.775 psi ... 87 psi
Temperature-dependent operating pressure	-0.095 MPa ... 1.4 MPa
Temperature-dependent operating pressure	-0.95 bar ... 14 bar
Temperature-dependent operating pressure	-13.775 psi ... 203 psi
Max. rotational speed	500 rpm
Operating medium	Compressed air to ISO 8573-1:2010 [7:-:-]
Note on operating and pilot medium	Lubricated operation possible
Corrosion resistance class CRC	1 - Low corrosion stress
LABS (PWIS) conformity	VDMA24364-B1/B2-L
Ambient temperature	0 °C ... 60 °C
Max. radial torque	0.006 Nm
Nominal torque	1.2 Nm
Tolerance for nominal tightening torque	± 20%
Product weight	13 g
Type of mounting	External hexagon, size 12 mm
Pneumatic connection, port 1	Male thread M5
Pneumatic connection, port 2	For tubing outside diameter of 4 mm
Colour of release ring	Blue
Material screwed plug	Nickel-plated brass
Note on materials	RoHS-compliant
Material housing	PBT
Material release ring	POM
Material tubing seal	NBR
Material tubing clamp component	High-alloy stainless steel