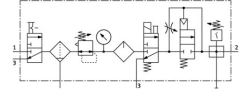
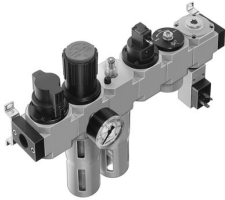


Service unit combination FRC-1/2-D-MIDI-KF

Part number: 185847

FESTO



[PDF](#) [General operating condition](#)

Data sheet

Feature	Value
Size	Midi
Series	D
Actuator lock	Rotary knob with detent
Mounting position	Vertical +/-5°
Grade of filtration	40 µm
Condensate drain	Manually rotating
Design	Proportional standard mist lubricator Safety start-up valve
Max. condensate volume	43 ml
Bowl guard	Metal bowl guard
Symbol	00991563
Pressure gauge (ANALOG) or Pressure display (DIGITAL)	With pressure gauge
Operating pressure	0.3 MPa ... 1.6 MPa
Operating pressure	3 bar ... 16 bar
Operating pressure	43.5 psi ... 232 psi
Pressure regulation range	0.25 MPa ... 1.2 MPa
Pressure regulation range	2.5 bar ... 12 bar
Pressure regulation range	36.25 psi ... 174 psi
Max. pressure hysteresis	0.025 MPa
Max. pressure hysteresis	0.25 bar
Max. pressure hysteresis	3.625 psi
Standard nominal flow rate (standardised to DIN 1343)	1220 l/min
Operating medium	Inert gas
Corrosion resistance class CRC	2 - Moderate corrosion stress
LABS (PWIS) conformity	VDMA24364-B1/B2-L
Air purity class at output	Compressed air to ISO 8573-1:2010 [7:4:-] Inert gases
Media temperature	-10 °C ... 60 °C
Ambient temperature	-10 °C ... 60 °C
Product weight	4000 g
Type of mounting	With accessories
Pneumatic connection, port 1	G1/2
Pneumatic connection, port 2	G1/2
Material housing	Die-cast zinc
Material bowl	PC