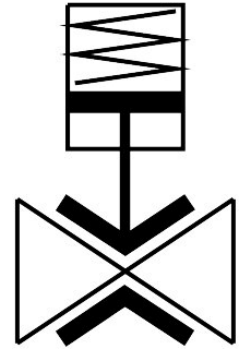


Pinch valve VZQA-C-M22C-15-GG-V2V4E-6

Part number: 3412426

FESTO



[PDF](#) [General operating condition](#)

Data sheet

Feature	Value
Design	Pinch valve, pneumatically actuated
Type of actuation	Pneumatic
Sealing principle	Soft
Mounting position	optional
Type of mounting	In-line installation
Connection Process valve	G1/2
Nominal size DN	15
Valve function	2/2-way, closed, monostable
Flow direction	Reversible
Medium pressure	0 MPa ... 0.6 MPa
Medium pressure	0 bar ... 6 bar
Medium pressure	0 psi ... 87 psi
Note on the medium pressure	Use in the vacuum range was tested up to -0.09 MPa with the air at room temperature. Depending on the application, a counter-vacuum may have to be created on the control side to guarantee the media flow.
Operating pressure	0.35 MPa ... 0.6 MPa
Operating pressure	3.5 bar ... 6 bar
Operating pressure	50.75 psi ... 87 psi
Nominal pressure PN	10
Burst pressure	1.6 MPa
Burst pressure	16 bar
Burst pressure	232 psi
Type of reset	Mechanical spring
Type of piloting	Externally controlled
Auxiliary pilot air port 12	M5
Pilot medium	Compressed air to ISO 8573-1:2010 [7:4:1]
Symbol	00992981
Medium	Compressed air to ISO 8573-1:2010 [-:::1] Water
Max. viscosity	4000 mm ² /s

Feature	Value
Media temperature	-5 °C ... 100 °C
Ambient temperature	-5 °C ... 60 °C
Storage temperature	5 °C ... 20 °C
Flow rate Kv	5 m ³ /h
Switching time on	150 ms
Switching time off	250 ms
Note on materials	RoHS-compliant
LABS (PWIS) conformity	VDMA24364 zone III
Material housing	High-alloy stainless steel
Material number housing	1.4301
Material housing cover	High-alloy stainless steel
Material number housing cover	1.4404 / AISI 316L
Material seals	FPM
Material shut-off element	EPDM
Product weight	537 g
Suitable for use with food	See supplementary material information
Material bowl	PA6