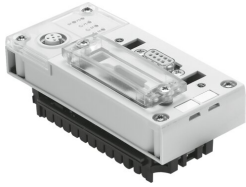


# Bus node CPX-FB23-24

Part number: 526176

FESTO



 General operating condition

## Data sheet

Feature	Value
Protocol	CC-LINK®
Dimensions (W x L x H)	50 mm x 107 mm x 50 mm
Product weight	115 g
Ambient temperature	-5 °C ... 50 °C
Storage temperature	-20 °C ... 70 °C
Degree of protection	IP65 IP67
Corrosion resistance class CRC	1 - Low corrosion stress
LABS (PWIS) conformity	VDMA24364-B2-L
Material housing	Makrolon®
LED display, product-specific	M: Modify, parameterisation PL: Load supply PS: Electronics supply, sensor supply SF: System errors
LED display, bus-specific	Error: Communication error RD: Receive data Run: Communication status SD: Transmit data-
Device-specific diagnostics	Channel-oriented and module-oriented diagnostics Undervoltage of modules Diagnostics memory
Operator controls	DIL switch
Field bus interface	Sub-D socket, 9-pin Sub-D plug connector, for self-assembly Screw terminal strip, IP20
Max. address volume, inputs	32 Byte
Note on inputs	14 bytes on Rx (F23) 32 bytes with RWr (F23) 64 byte at Rx, RWr (F24)
Max. address volume, outputs	32 Byte
Note on outputs	14 bytes with Ry (F23) 32 bytes with RWw (F23) 64 bytes on Ry, RWw (F24)
Parameterisation	Diagnostic behaviour Fail-safe response Forcing of channels Signal setup System parameters
Baud rate	156 ... 10000 kbit/s
Additional functions	System status can be mapped using process data Additional diagnostic interface for operator units

<b>Feature</b>	<b>Value</b>
Operational voltage range DC	18 V ... 30 V
Nominal operating voltage DC	24 V
Intern power consumption nominal operating voltage	Typ. 70 mA