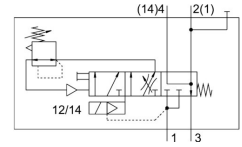
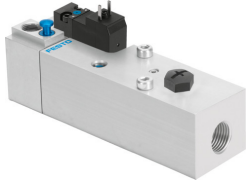


Soft start valve VABF-S6-1-P5A4-G12-4-1

Part number: 558230

FESTO



[PDF General operating condition](#)

Data sheet

Feature	Value
Max. positive test pulse with 0 signal	2500 µs
Max. negative test pulse with 1 signal	1400 µs
Vibration resistance	Transport application test with severity level 2 to FN 942017-4 and EN 60068-2-6
Shock resistance	Shock test with severity level 2 to FN 942017-5 and EN 60068-2-27
Based on standard	ISO 5599-2
Type of actuation	Electric
Sealing principle	Soft
Mounting position	optional
Manual override	Detenting Self-resetting via electrical control signal
Design	Piston gate valve
Type of reset	Mechanical spring
Type of piloting	Pilot actuated
Pilot air supply	Internal
Flow direction	Non-reversible
Symbol	00995781
Valve function	Soft-start function
Note on forced dynamization	Switching frequency min. 1/month
Operating pressure	0.2 MPa ... 1.2 MPa
Operating pressure	2 bar ... 12 bar
Switchover pressure presetting	4 bar
Standard nominal flow rate ventilation	3000 l/min
Standard nominal flow rate for exhaust	3300 l/min
Nominal operating voltage DC	24 V
Characteristic coil data	24 V DC: 2.5 W
Permissible voltage fluctuations	+/- 10 %
Operating medium	Compressed air to ISO 8573-1:2010 [7:4:4]
Note on operating and pilot medium	Lubricated operation possible (in which case lubricated operation will always be required)
Corrosion resistance class CRC	0 - No corrosion stress
LABS (PWIS) conformity	VDMA24364-B1/B2-L
Degree of protection	IP65 NEMA 4
Ambient temperature	-5 °C ... 50 °C
Product weight	590 g

Feature	Value
Electrical connection	Type C Plugs To EN 175301-803 Square design
Type of mounting	On sub-base
Pilot air port 12/14	Sub-base size 1 to ISO 5599-2
Pneumatic connection, port 1	Sub-base size 1 to ISO 5599-2
Pneumatic connection, port 2	Sub-base size 1 to ISO 5599-2
Pneumatic connection, port 3	G1/2
Pneumatic connection, port 4	Sub-base size 1 to ISO 5599-2
Note on materials	RoHS-compliant
Material seals	HNBR NBR
Material housing	Wrought aluminium alloy
Material screws	Steel Galvanised