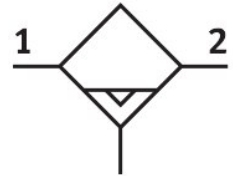


Water separator MS6-LWS-1/4-U-V

Part number: 564868

FESTO



 General operating condition

Data sheet

Feature	Value
Size	6
Series	MS
Mounting position	Vertical +/-5°
Condensate drain	Fully automatic
Design	Centrifugal separator
Max. condensate volume	38 ml
Bowl guard	Integrated as metal bowl
Degree of condensate separation	99 %
Symbol	00992244
Operating pressure	2 bar ... 12 bar
Standard nominal flow rate (standardised to DIN 1343)	2400 l/min
Operating medium	Compressed air to ISO 8573-1:2010 [7:-:-] Inert gases
Corrosion resistance class CRC	2 - Moderate corrosion stress
LABS (PWIS) conformity	VDMA24364-B1/B2-L
Suitable for use with food	See supplementary material information
Air purity class at output	Compressed air to ISO 8573-1:2010 [7:7:4]
Media temperature	-10 °C ... 60 °C
Ambient temperature	-10 °C ... 60 °C
Product weight	820 g
Type of mounting	With accessories
Pneumatic connection, port 1	G1/4
Pneumatic connection, port 2	G1/4
Note on materials	RoHS-compliant
Material seals	NBR
Material housing	Die-cast aluminium
Material bowl	Wrought aluminium alloy
Material screen	PA