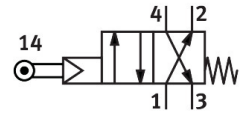


# Roller lever valve RS-4-1/8

Part number: 2949

FESTO



[PDF](#) General operating condition

## Data sheet

Feature	Value
Valve function	4/2-way, monostable
Type of actuation	Mechanical
Standard nominal flow rate (standardised to DIN 1343)	128 l/min
pneumatic working port	G1/8
Operating pressure	0.35 MPa ... 0.8 MPa
Operating pressure	3.5 bar ... 8 bar
Design	Poppet seat
Type of reset	Mechanical spring
Nominal size	3.5 mm
Exhaust-air function	With flow control option
Sealing principle	Soft
Mounting position	optional
Type of piloting	Pilot actuated
Pilot air supply	Internal
Flow direction	Non-reversible
Symbol	00991139
Pilot medium	Compressed air to ISO 8573-1:2010 [:-:-]
Note on forced dynamization	Switching frequency min. 1/year
Explosion protection	Zone 1 (ATEX) Zone 2 (ATEX) Zone 21 (ATEX) Zone 22 (ATEX)
Operating medium	Compressed air to ISO 8573-1:2010 [:-:-]
Note on operating and pilot medium	Lubricated operation possible (in which case lubricated operation will always be required)
Corrosion resistance class CRC	2 - Moderate corrosion stress
LABS (PWIS) conformity	VDMA24364-B1/B2-L
Media temperature	-10 °C ... 60 °C
Ambient temperature	-10 °C ... 60 °C
Actuating force	1.77 N
Product weight	230 g
Type of mounting	With through-hole
Pneumatic connection, port 1	G1/8
Pneumatic connection, port 2	G1/8
Pneumatic connection, port 3	G1/8
Pneumatic connection, port 4	G1/8
Note on materials	RoHS-compliant

<b>Feature</b>	<b>Value</b>
Material seals	NBR
Material housing	Anodised