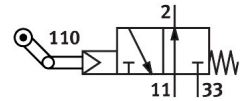


# Toggle lever valve LOS-3-1/8

Part number: 2950

FESTO



[PDF General operating condition](#)

## Data sheet

Feature	Value
Valve function	3/2 open, single solenoid
Type of actuation	Mechanical
Standard nominal flow rate (standardised to DIN 1343)	175 l/min
pneumatic working port	G1/8
Operating pressure	0.35 MPa ... 0.8 MPa
Operating pressure	3.5 bar ... 8 bar
Design	Poppet seat
Type of reset	Mechanical spring
Nominal size	3.5 mm
Exhaust-air function	With flow control option
Sealing principle	Soft
Mounting position	optional
Type of piloting	Pilot actuated
Pilot air supply	Internal
Flow direction	Non-reversible
Symbol	00991118
Pilot medium	Compressed air to ISO 8573-1:2010 [-:-:-]
Note on forced dynamization	Switching frequency min. 1/year
Operating medium	Compressed air to ISO 8573-1:2010 [-:-:-]
Note on operating and pilot medium	Lubricated operation possible (in which case lubricated operation will always be required)
Corrosion resistance class CRC	2 - Moderate corrosion stress
LABS (PWIS) conformity	VDMA24364-B1/B2-L
Media temperature	-10 °C ... 60 °C
Ambient temperature	-10 °C ... 60 °C
Actuating force	1.8 N
Product weight	110 g
Type of mounting	With through-hole
Pneumatic connection, port 1	G1/8
Pneumatic connection, port 2	G1/8
Pneumatic connection, port 3	G1/8
Note on materials	RoHS-compliant
Material seals	NBR
Material housing	Aluminium Anodised