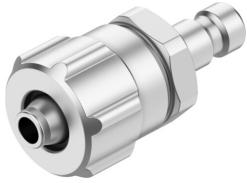


Quick coupling plug KS2-CK-4

Part number: 4090

FESTO



 [General operating condition](#)

Data sheet

| Feature | Value |
|---|--|
| Nominal size | 2.7 mm |
| Operating pressure complete temperature range | -0.095 MPa ... 1.2 MPa |
| Operating pressure complete temperature range | -0.95 bar ... 12 bar |
| Operating pressure complete temperature range | -13.775 psi ... 174 psi |
| Standard nominal flow rate (standardised to DIN 1343) | 86 l/min ... 129 l/min |
| Nominal flow rate standardised according to ISO 8778 | 93.2 l/min ... 139.8 l/min |
| Operating medium | Compressed air to ISO 8573-1:2010 [7::-:] |
| Note on operating and pilot medium | Lubricated operation possible |
| Corrosion resistance class CRC | 1 - Low corrosion stress |
| LABS (PWIS) conformity | VDMA24364-B1/B2-L |
| Ambient temperature | -10 °C ... 60 °C |
| Product weight | 11 g |
| Pneumatic connection, port 1 | For tubing outside diameter of 6 mm For barbed fitting I.D. 4 mm with union nut |
| Material union nut | Wrought aluminium alloy, anodised |
| Note on materials | RoHS-compliant |
| Information on materials | Brass, nickel plated |