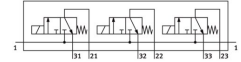
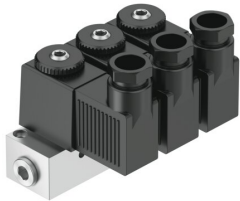


# Solenoid valve BMFH-3-3-M5

Part number: 4523

FESTO



[PDF](#) General operating condition

## Data sheet

Feature	Value
Valve function	3x3/2-way, monostable, closed
Type of actuation	Electric
Standard nominal flow rate (standardised to DIN 1343)	50 l/min
pneumatic working port	M5
Operating pressure	0 MPa ... 0.8 MPa
Operating pressure	0 bar ... 8 bar
Design	Poppet valve with spring return
Type of reset	Mechanical spring
Degree of protection	IP65
Nominal size	1.3 mm
Sealing principle	Soft
Max. number of valve positions	3
Type of piloting	Direct
Symbol	00991652
Power consumption, pull	7.5 W
Power consumption, hold	6 W
Operating medium	Compressed air to ISO 8573-1:2010 [7:-:-]
Note on operating and pilot medium	Lubricated operation possible (in which case lubricated operation will always be required)
LABS (PWIS) conformity	VDMA24364-B2-L
Media temperature	-10 °C ... 60 °C
Ambient temperature	-5 °C ... 40 °C
Product weight	350 g
Electrical connection	Plugs
Type of mounting	With through-hole
Pneumatic connection, port 1	G1/8
Pneumatic connection, port 2	M5
Pneumatic connection, port 3	M5
Material housing	Aluminium