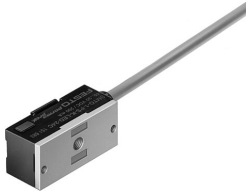


# Proximity sensor SMT0-1-NS-K-LED-24-C

Part number: 151684

FESTO



[PDF](#) [General operating condition](#)

## Datasheet product reliability

The information in this "Product reliability data sheet" is based on products being used as intended. This includes complying with all specifications in data sheets, catalogues, user documentation and the general operating conditions. The user alone is responsible for determining whether a product is suitable for a particular application.

Feature	Value
Mean time to failure (MTTF) <sup>1)</sup>	8719 Year
Max. switching frequency	1 kHz
CE mark (see declaration of conformity)	To EU EMC Directive To EU RoHS Directive

1) The ascertainment of the MTTF value is based on the IEC 61709 "Electric components - Reliability - Reference conditions for failure rates and stress models for conversion" respectively on the SN 29500.