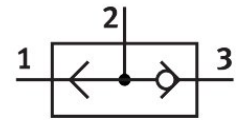


OR gate OS-1/2

Part number: 3427

FESTO



[PDF](#) [General operating condition](#)

Datasheet product reliability

The information in this "Product reliability data sheet" is based on products being used as intended. This includes complying with all specifications in data sheets, catalogues, user documentation and the general operating conditions. The user alone is responsible for determining whether a product is suitable for a particular application.

Feature	Value
Fault exclusion	Bursting of the valve housing: externally directed failure of the material structure with a sudden release of the medium and associated pressure drop (according to ISO 5598, 3.2.85).
Well-tried component ¹⁾	Yes

1) The product is a well-tried product for a safety-related application according to ISO 13849-1. The relevant basic and well-tried safety principles according ISO 13849-2 for this product are fulfilled. The suitability of the product for a precise application must be verified by the user.