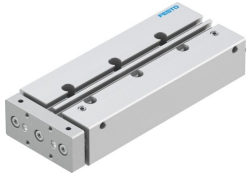


Guided drive DFM-12-100-P-A-GF

Part number: 170831

FESTO



 [General operating condition](#)

Data sheet

Feature	Value
Distance from centre of gravity of load to yoke plate xs	25 mm
Stroke	100 mm
Piston diameter	12 mm
Operating mode, drive unit	Yoke
Cushioning	Elastic cushioning rings/plates at both ends
Mounting position	optional
Guide	Plain-bearing guide
Design	Guidance
Position detection	Via proximity switch
Symbol	00991737
Operating pressure	0.2 MPa ... 1 MPa
Operating pressure	2 bar ... 10 bar
Max. speed	0.8 m/s
Mode of operation	Double-acting
Operating medium	Compressed air to ISO 8573-1:2010 [7:4:4]
Note on operating and pilot medium	Lubricated operation possible (in which case lubricated operation will always be required)
Corrosion resistance class CRC	1 - Low corrosion stress
LABS (PWIS) conformity	VDMA24364-B1/B2-L
Cleanroom suitability, measured according to ISO 14644-14	Class 6 according to ISO 14644-1
Ambient temperature	-20 °C ... 80 °C
Impact energy in end positions	0.07 J
Max. force Fy	240 N
Max. force Fy static	240 N
Max. force Fz	240 N
Max. force Fz static	240 N
Max. moment Mx	4.92 Nm
Max. torque Mx static	4.92 Nm
Max. moment My	3.74 Nm
Max. torque My static	3.74 Nm
Max. moment Mz	3.74 Nm
Max. torque Mz static	3.74 Nm
Max. permissible torque load Mx as a function of stroke	0.47 Nm
Max. effective load dependent upon stroke at defined distance xs	19 N
Theoretical force at 0.6 MPa (6 bar, 87 psi), return stroke	51 N
Theoretical force at 0.6 MPa (6 bar, 87 psi), advance stroke	68 N

Feature	Value
Moving mass	318 g
Product weight	779 g
alternative connections	See product drawing
Pneumatic connection	M5
Note on materials	RoHS-compliant
Material cover	Wrought aluminium alloy
Material seals	NBR
Material housing	Wrought aluminium alloy
Material piston rod	High-alloy stainless steel