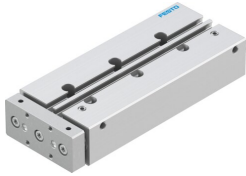


Guided drive DFM-12-100-P-A-KF

Part number: 170906

FESTO



 [General operating condition](#)

Data sheet

Feature	Value
Distance from centre of gravity of load to yoke plate xs	25 mm
Stroke	100 mm
Piston diameter	12 mm
Operating mode, drive unit	Yoke
Cushioning	Elastic cushioning rings/plates at both ends
Mounting position	optional
Guide	Recirculating ball bearing guide
Design	Guidance
Position detection	Via proximity switch
Symbol	00991737
Operating pressure	0.2 MPa ... 1 MPa
Operating pressure	2 bar ... 10 bar
Max. speed	0.8 m/s
Mode of operation	Double-acting
Operating medium	Compressed air to ISO 8573-1:2010 [7:4:4]
Note on operating and pilot medium	Lubricated operation possible (in which case lubricated operation will always be required)
Corrosion resistance class CRC	0 - No corrosion stress
LABS (PWIS) conformity	VDMA24364-B1/B2-L
Cleanroom suitability, measured according to ISO 14644-14	Class 6 according to ISO 14644-1
Ambient temperature	-5 °C ... 60 °C
Impact energy in end positions	0.07 J
Max. force Fy	375 N
Max. force Fy static	343 N
Max. force Fz	375 N
Max. force Fz static	343 N
Max. moment Mx	7.68 Nm
Max. torque Mx static	7.04 Nm
Max. moment My	3.56 Nm
Max. torque My static	3.26 Nm
Max. moment Mz	3.56 Nm
Max. torque Mz static	3.26 Nm
Max. permissible torque load Mx as a function of stroke	0.53 Nm
Max. effective load dependent upon stroke at defined distance xs	22 N
Theoretical force at 0.6 MPa (6 bar, 87 psi), return stroke	51 N
Theoretical force at 0.6 MPa (6 bar, 87 psi), advance stroke	68 N

Feature	Value
Moving mass	257 g
Product weight	737 g
Centre of gravity of moving mass as a function of stroke	48.8 mm
alternative connections	See product drawing
Pneumatic connection	M5
Note on materials	RoHS-compliant
Material cover	Wrought aluminium alloy
Material seals	NBR
Material housing	Wrought aluminium alloy
Material piston rod	High-alloy stainless steel