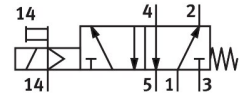
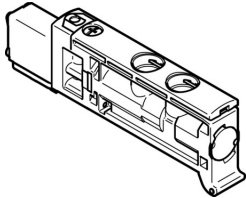


Solenoid valve VUVB-ST12-M52-MZD-QX-1T1

Part number: 570908

FESTO



 [General operating condition](#)

Data sheet

Feature	Value
Valve function	5/2-way, monostable
Type of actuation	Electric
Valve size	12 mm
Standard nominal flow rate (standardised to DIN 1343)	240 l/min ... 400 l/min
pneumatic working port	QS-4 QS-6
Operating pressure	0.28 MPa ... 0.8 MPa
Operating pressure	2.8 bar ... 8 bar
Design	Poppet valve with spring return
Type of reset	Mechanical spring
Degree of protection	IP65
Nominal size	4 mm
Exhaust-air function	Without flow control option
Sealing principle	Soft
Mounting position	optional
Manual override	Detenting Non-detenting
Type of piloting	Pilot actuated
Pilot air supply	External
Flow direction	Non-reversible
Symbol	00991009
Note on operating pressure	0 - 0.8 MPa with ext. pilot air 0 - 8 bar with external pilot air
Pilot pressure	0.28 MPa ... 0.8 MPa
Pilot pressure	2.8 bar ... 8 bar
Switching time off	14 ms
Switching time on	6 ms
Duty cycle	100%
Max. positive test pulse with 0 signal	800 µs
Max. negative test pulse with 1 signal	300 µs
Characteristic coil data	24 V DC: 1.0 W
Permissible voltage fluctuations	+/- 10 %
Operating medium	Compressed air to ISO 8573-1:2010 [7:4:4]
Note on operating and pilot medium	Lubricated operation possible (in which case lubricated operation will always be required)
Vibration resistance	Transport application test with severity level 1 to FN 942017-4 and EN 60068-2-6

Feature	Value
Shock resistance	Shock test with severity level 1 to FN 942017-5 and EN 60068-2-27
Corrosion resistance class CRC	0 - No corrosion stress
LABS (PWIS) conformity	VDMA24364-B1/B2-L
Media temperature	-5 °C ... 60 °C
Sound pressure level	85 dB(A)
Ambient temperature	-5 °C ... 60 °C
Product weight	27.5 g
Electrical connection	Via sub-base
Type of mounting	On sub-base
Auxiliary pilot air port 14	Sub-base
Pneumatic connection, port 1	Sub-base
Pneumatic connection, port 3	Sub-base
Pneumatic connection, port 5	Sub-base
Note on materials	RoHS-compliant
Material seals	NBR TPE-U(PU)
Material housing	PA-reinforced
Material piston slide	Wrought aluminium alloy