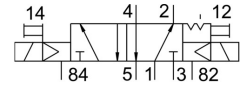
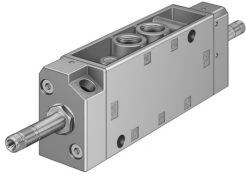


Electroválvula JMFH-5-1/4

Número de artículo: 10410

FESTO



[PDF](#) General operating condition

Datasheet product reliability

The information in this "Product reliability data sheet" is based on products being used as intended. This includes complying with all specifications in data sheets, catalogues, user documentation and the general operating conditions. The user alone is responsible for determining whether a product is suitable for a particular application.

Característica	Valor
Service-life value B_{10} ¹⁾	10 Mio cycles
Well-tried component ²⁾	Yes
Max. switching frequency	25 Hz
Design characteristics	Remains in switching position on signal switch-off (bistable valve) Underlap
Lap	Underlap
Max. positive test pulse with 0 signal	2200 μ s
Max. negative test pulse with 1 signal	3700 μ s

- 1) The ascertainment of characteristic service life values is generally based on the ISO 19973 "Pneumatic fluid power - Assessment of component reliability by testing".
- 2) The product is a well-tried product for a safety-related application according to ISO 13849-1. The relevant basic and well-tried safety principles according ISO 13849-2 for this product are fulfilled. The suitability of the product for a precise application must be verified and confirmed by the user.