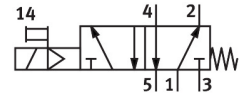
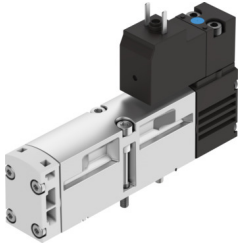



# Electroválvula VSVA-B-M52-MH-A2-1C1

Número de artículo: 546703

FESTO



 [General operating condition](#)

## Datasheet product reliability

The information in this "Product reliability data sheet" is based on products being used as intended. This includes complying with all specifications in data sheets, catalogues, user documentation and the general operating conditions. The user alone is responsible for determining whether a product is suitable for a particular application.

Característica	Valor
Relevant basic safety principles <sup>1)</sup>	Yes
Service-life value B <sub>10</sub> <sup>2)</sup>	10 Mio cycles
Service-life value B10D <sup>3)</sup>	20 Mio cycles
Relevant well-tried safety principles <sup>4)</sup>	Yes
Well-tried component <sup>5)</sup>	Yes
Design characteristics	Mechanical spring return
Lap	Overlap
Vibration resistance	Transport application test with severity level 2 in accordance with FN942017-4 and EN 60068-2-6
Shock resistance	Shock test with severity level 2 in accordance with FN 942017-5 and EN 60068-2-27
Max. positive test pulse with 0 signal	1800 µs
Max. negative test pulse with 1 signal	800 µs

- 1) The product-relevant basic safety principles are fulfilled according to the ISO 13849-2.
- 2) The ascertainment of characteristic service life values is generally based on the ISO 19973 "Pneumatic fluid power - Assessment of component reliability by testing".
- 3) B10D value determined on the basis of ISO 13849-1: e.g. B10D=2\*B10. Whether this value is suitable for a specific application must be checked and confirmed by the user.
- 4) The product-relevant well-tried safety principles are fulfilled according to the ISO 13849-2.
- 5) The product is a well-tried product for a safety-related application according to ISO 13849-1. The relevant basic and well- tried safety principles according ISO 13849-2 for this product are fulfilled. The suitability of the product for a precise application must be verified and confirmed by the user.